



Industrial Fog Nozzles

Features:

- maximum operating pressure: **175 PSI** (water only) at **70°F (21°C)**
- delivers 30° - 60° - 90° fog pattern - shut-off - straight stream - fog
- UL listed and Factory Mutual approved for class A and B fires (except noted ^{1,2})
- supplied with bumper



Size	Thread	90° Spray GPM @ 100 PSI	Brass Part #
3/4"	GHT	---	BFN75GHT ¹
3/4"	NPSH	---	BFN75
1"	NPSH	32	BFN100
1 1/2"	NPSH	85	BFN150
2"	NPSH	108	BFN200 ^{1,2}
1"	NST (NH)	32	BFN100NST
1 1/2"	NST (NH)	85	BFN150NST
2 1/2"	NST (NH)	205	BFN250NST ²

¹ not UL Listed

² not Factory Mutual approved

• replacement washers can be found on page 741



Heavy Duty Industrial Fog Nozzles

Features:

- maximum operating pressure: **175 PSI** (water only) at **70°F (21°C)**
- delivers 30° - 60° - 90° fog pattern - shut-off - straight stream - fog
- UL listed and Factory Mutual approved
- New UL and FM approvals are pending due to change in standard UL 401
- Products are to be reapproved, data subject to change in coming months
- supplied with bumper



Size	Thread	90° Spray GPM @ 100 PSI	Brass Part #
1"	NPSH	---	HFN100
1 1/2"	NPSH	88 (+/-12)	HFN150
1"	NST (NH)	---	HFN100NST
1 1/2"	NST (NH)	88 (+/-12)	HFN150NST
1 1/2"	NYFD	---	HFN150NYFD

• replacement washers can be found on page 741, flow rate chart on following page 753



High Pressure Industrial Fog Nozzles

Features:

- working pressure: **25 to 300 PSI** (water only) at **70°F (21°C)**
- combination straight stream and fog - shut-off - straight stream - fog
- Factory Mutual approved
- large one-piece rubber bumper with molded teeth
- knurled base




Size	Thread	90° Spray GPM @ 100 PSI	Brass Part #
1 1/2"	NPSH	117	HPFN150
1 1/2"	NST (NH)	117	HPFN150NST

• replacement washers can be found on page 741, flow rate chart on following page 753



Electrical Fire All-Fog Nozzles

Features:

- maximum operating pressure: **100 PSI** (water only) at **70°F (21°C)**
- delivers 30° - 60° - 90° fog pattern - shutoff to 30° fog, adjustable to 90° fog
- UL listed and Factory Mutual approved for class C fires
- New UL and FM approvals are pending due to change in standard UL 401
- Products are to be reapproved, data subject to change in coming months
- supplied with bumper
- Use of this nozzle is not likely to prove hazardous when nozzle is held in excess of 10 feet from electrical apparatus and circuits not involving more than 250,000 volts. 



Size	Thread	Wide Open GPM @ 100 PSI	Brass Part #
1 1/2"	NST (NH)	96	BFNE150NST
1 1/2"	NPSH	96	BFNE150

• replacement washers can be found on page 741, flow rate chart on following page 753

Fire Nozzles

Fog Nozzles

Features:

- shutoff - straight stream - fog
- maximum operating pressure: **100 PSI** (water only) at **70°F (21°C)**
- brass stem

Size	Thread	90° Spray GPM @ 100 PSI	Polycarbonate ¹ Part #	Polycarbonate ² Part #
¾"	GHT	8.0	FNB75GHT ^{3,4}	---
¾"	NPS	30.9	FNB75S ⁴	---
1"	NPS	11.4	FNB100S ⁴	FN100S
1"	NPS	30.9	HGB100S	---
1½"	NPS	83.6	FNB150S	FN150S
1"	NST (NH)	11.4	FNB100NST	FN100NST
1"	NST (NH)	30.9	HGB100NST	---
1½"	NST (NH)	83.6	FNB150NST	FN150NST

¹ with bumper

² without bumper

³ standard flow

⁴ 120° spray GPM @100 PSI

- replacement washers can be found on page 741



with bumper



without bumper

Fire Fittings & Accessories

Fog Nozzle Flow Rate Chart

Part Number	Inlet Pressure		Straight Stream		30°		60°		90°	
	PSI	kPa	GPM	LPM	GPM	LPM	GPM	LPM	GPM	LPM
BFN100	50	(345)	18	(68)	21	(79)	24	(91)	27	(102)
	75	(517)	22	(83)	25	(95)	28	(106)	32	(121)
	100	(690)	24	(91)	28	(106)	32	(121)	36	(136)
BFN250	50	(345)	90	(341)	120	(454)	130	(492)	145	(549)
	75	(517)	100	(379)	140	(530)	150	(568)	180	(681)
	100	(690)	110	(416)	165	(625)	180	(681)	205	(776)
HFN100	100	(690)	25	(95)	---	---	---	---	---	---
HFN150	100	(690)	---	---	---	---	---	---	86	(326)
HPFN150	275	(1040)	---	---	---	---	---	---	130	(492)

Domestic Rack Nozzles



Features:

- maximum operating pressure: **100 PSI** (water only) at **70°F (21°C)**
- UL listed and Factory Mutual approved for class A and B fires
- New UL and FM approvals are pending due to change in standard UL 401
- Products are to be reapproved, data subject to change in coming months
- delivers 30° - 60° - 90° fog pattern - shut-off - straight stream - fog
- supplied without bumper

Size	Thread	Wide Open GPM @ 100 PSI	Brass Part #
1½"	NST (NH)	100	BRN150NST
	NPSH	100	BRN150

- replacement washers can be found on page 741



Global Rack Nozzles



Features:

- maximum operating pressure: **100 PSI** (water only) at **70°F (21°C)**
- UL listed and Factory Mutual approved for class A and B fires
- New UL and FM approvals are pending due to change in standard UL 401
- Products are to be reapproved, data subject to change in coming months
- delivers 30° - 60° - 90° fog pattern - shut-off - straight stream - fog
- supplied without bumper

Size	Thread	Wide Open GPM @ 100 PSI	Brass Part #
1½"	NST (NH)	100	BRN150NST-I
	NPSH	100	BRN150S-I

- replacement washers can be found on page 741



Ball Shut-Offs



Features:

- full time swivel base ensures durable rubber-like handle can be positioned for easy operation
- maximum operating pressure: **100 PSI** (water only) at **70°F (21°C)**

Thread	Length	Waterway	Cast Brass Part #
1½" NST (NH)	4¾"	1⅜"	BSO150NST
1½" NPSH	4¾"	1⅜"	BSO150S

Replacement Part



Description	Composite Part #
replacement handle	BSO150-H

Nozzle Tips



Features:

- straight stream only
- maximum operating pressure: **100 PSI** (water only) at **70°F (21°C)**
- **74 GPM @ 100 PSI**

Thread	Length	Orifice	Satin Brass Part #
1" NST (NH)	4¾"	½"	BNT100F
1" NPSH	4¾"	½"	BNT100S
1½" NST (NH)	4⅜"	½"	BNT150F
1½" NPSH	4⅜"	½"	BNT150S

Plain Hose Nozzles



Features:

- finish: satin
- maximum operating pressure: **100 PSI** (water only) at **70°F (21°C)**

Size	Thread	Overall Length	Orifice	Replacement Gasket	Previous Part #	Brass
						Part #
¾"	GHT	6"	1/4"	KRW5	500SN6	BN6
¾"	NPSH	6"	1/4"	KRW5	---	BN7
1"	NPSH	8"	5/16"	KRW10	---	BN10
1¼"	NPSH	10"	3/8"	KRW15	---	BN12
1½"	NPSH	10"	1/2"	KRW20	---	BN15
2"	NPSH	12"	9/16"	SW200	---	BN20
2½"	NPSH	12"	1"	KRW35	---	BN25
1"	NST (NH)	8"	5/16"	SW100F	---	BN10F
1½"	NST (NH)	10"	1/2"	SW150	---	BN15F
2½"	NST (NH)	12"	1"	SW250	---	BN25F
1½"	NYFD	10"	1/2"	SW150	---	BN15NYFD
2½"	NYFD	12"	1"	SW250	---	BN25NYFD

Twist Nozzles



Feature:

- maximum operating pressure **150 PSI** (water only)

Thread Size	Length	Previous Part #	Extruded Brass Part #
¾" GHT	4"	---	BTN75
	4"	---	500AN4¹
	6¾"	500-AN7	500AN7¹

¹ imported

Red Plain Hose Nozzles

Feature:

- maximum operating pressure: **100 PSI** (water only) at **70°F (21°C)**

Size	Thread	Length	Orifice	Polycarbonate Part #
1½"	NPSH	10"	½"	PN15
	NST (NH)	10"	½"	PN15F



Fire Fittings & Accessories

UL Play Pipes with Tip



Application:

- often required in hydrant houses by Insurance Underwriters

Features:

- swivel handle, red marlin trim
- maximum operating pressure: **100 PSI** (water only) at **70°F (21°C)**
- UL listed and Factory Mutual approved
- ULT male thread specification: 2-3/16" ODM x 12 TPI
- comes standard with 1½" orifice tip

Size	Female Thread	Male Thread	Overall Length	Brass Part #
2½"	NST (NH)	ULT	30"	UPP250F
		playpipe only		UPP250F-SPEC



Tips

Features:

- finish: satin
- maximum operating pressure: **100 PSI** (water only) at **70°F (21°C)**
- ULT male thread specification: 2-3/16" ODM x 12 TPI

Orifice	Cast Brass Part #
1⅛"	UPPT
1¼"	UPPT125
1½"	UPPT150
1¾"	UPPT175



Street Cleaning Nozzles

Feature:

- welded fabrication

Size	Connection	Aluminum Part #
2"	female cam	200DBAL
3"	female cam	300DBAL



U.S. Coast Guard Approved AFFF / Water Fog Nozzles

Fire Fittings & Accessories



CGSN150F

Application:

- designed for maximum efficiency with AFFF (Aqueous Film Forming Foams) or water on shipboard, offshore rigs and industrial applications

Features:

- corrosion resistant brass construction
- rubber-like bumper and handle for added protection
- Zytel (nylon) horseshoe handle
- double row of molded teeth for excellent fog pattern
- flush without shutting down
- constant gallonage in all fog and straight stream patterns
- combination fog and straight stream
- maximum operating pressure: **100 PSI** (water/AFFF only) at **70°F (21°C)**



CGSN151F

Thread NST (NH)	Description	Fog Flow GPM @100 PSI	Approval #	Brass Part #
1½"	nozzle	95	162.027/13/0	CGSN150F
	nozzle w/pistol grip	95	162.027/14/0	CGSN151F

- Gaskets are special order, please call 877.712.6179 for assistance.

Thread NPSH	Description	Fog Flow GPM @100 PSI	Brass Part #
1½"	nozzle	95	CGSN150S
	nozzle w/pistol grip	95	CGSN151S

U.S. Coast Guard Approved Fog Nozzles

Application:

- designed to US Coast Guard specifications for fighting fires with drafted water, required equipment for all commercial vessels under US registry

Features:

- maximum operating pressure: **100 PSI** (water/AFFF only) at **70°F (21°C)**
- corrosion resistant brass construction
- combination fog and straight stream for shipboard fire fighting
- applicator tips are available, consult Dixon® for pricing and availability



Thread	Fog Flow GPM @100 PSI	Cast Brass Part #
1½" NST	55	CGN150NST
2½" NST	108	CGN250NST

- Gaskets and tips are special order, please call 877.712.6179 for assistance.

Omega™ Monitor



Features:

- cast-in turning vanes for a more efficient flow
- 360° horizontal and 150° vertical travel
- friction loss: **10 PSI at 800 GPM** (.7 bar at 3030 LPM)
- 4 bolt hole pattern on flange
- Factory Mutual approved

Size	Inlet	Outlet	Waterway	Flow	Brass Part #
17" x 11½"	3" flange	2½" MNST	3"	1250 GPM	AK3526-300FL

- For flange dimensions, diagrams and additional information please reference dixonvalve.com.



Fire Fittings & Accessories

Monitor Nozzle

Features:

- fixed teeth
- combination Straight, Stream and Fog - no shutoff
- fixed gallonage master stream nozzle
- factory set at **500 GPM** (1900 lpm) field changeable to **300** or **700 GPM** (1140 or 2660 LPM)
- maximum operating pressure: **100 PSI** (water only)

Size	Thread	90° Spray GPM @ 100 PSI	Brass Part #
2½"	NST (NH)	500	AK4450NST

- Gaskets are special order, please call 877.712.6179 for assistance.



FirePro™ Monitor



Features:

- seamless 2½" monitor - rated at 750 GPM
- carbon steel construction, stainless steel discharge tip and ball bearings
- 360° horizontal and 140° vertical travel
- red epoxy finish standard
- 150# ASA raised face 4" flange
- Factory Mutual approved

Size	Inlet	Outlet	Waterway	Flow GPM	Carbon Steel Part #
22" x 13"	4" flange	2½" MNST	2½"	750	FP475S

- Gaskets are special order, please call 877.712.6179 for assistance.
- For flange dimensions, diagrams and additional information please reference dixonvalve.com.



Master Stream Nozzles

Features:

- factory set at **500 GPM**
- featuring a straight stream to fog 'quick throw' pattern change
- constant gallonage

Size	Thread	Material	Part #
2½"	NST (NH)	brass	FP500B¹
	NST (NH)	aluminum	FP500A

¹ Factory Mutual approved

- Gaskets are special order, please call 877.712.6179 for assistance.





Factory Mutual Approved Fog Nozzles

Features:

- brass stem with locking nut
- shutoff-straight-stream-fog
- wings on sleeve for ease of adjustment
- maximum operating pressure: **100 PSI** (water only) at **70°F (21°C)**
- Factory Mutual approved



with bumper



without bumper

Size	Thread	90° Spray GPM @ 100 PSI	Polycarbonate ¹ Part #	Polycarbonate ² Global Part #
3/4"	GHT	30.9	SL075GHT³	---
3/4"	NPSH	30.9	SL075³	---
1"	NPSH	30.9	SL100³	PFNB100S
1 1/2"	NPSH	75.0	SL150	PFNB150S
1"	NST (NH)	30.9	SL100NST	---
1 1/2"	NST (NH)	75.0	SL150NST	PFNB150NST

¹ with bumper
² without bumper
³ 120° spray on 3/4" and 1"

Polycarbonate Electrical Fire All-Fog Nozzles

Features:

- opens and closes in a 30° fog pattern up to 120°- no straight stream
- maximum operating pressure: **100 PSI** (water only) at **70°F (21°C)**
- brass stem



Size	Thread	75° Spray GPM @ 100 PSI	Polycarbonate Part #
1 1/2"	NPS	92	FNBE150S
	NST (NH)	92	FNBE150NST

Fog Nozzles Gaskets



Size	Thread	ID	OD	Thickness	Buna-N Part #
1"	NPSH	0.937"	1.234"	0.125"	FNG100S
1"	NPSH	1.000"	1.375"	0.125"	HGG100S
1 1/2"	NPSH	1.500"	1.827"	0.125"	FNG150S
1"	NST (NH)	0.937"	1.281"	0.125"	FNG100NST
1"	NST (NH)	1.000"	1.375"	0.125"	HGG100NST
1 1/2"	NST (NH)	1.510"	1.906"	0.125"	FNG150NST

• dimensions are nominal

Constant Flow Fog Nozzles

Features:

- red polycarbonate with bumper and black plastic and steel stem
- provides consistent volume at any spray angle
- adjusts from straight stream to fog
- 1" and 1½" are ULC listed
- maximum operating pressure: **100 PSI** (water only) at **70°F (21°C)**

Size	Thread	90° Spray GPM @ 100 PSI	Polycarbonate Part #
¾"	GHT	8	CFB75GHT
1"	NPSH	22	CFB100S
1½"	NPSH	75	CFB150S ¹
1½"	NPSH	150	HGCFB150S ²
2"	NPSH	75	CFB2015S ¹
2"	NPSH	150	CFB200S ²
1"	NST (NH)	22	CFB100NST
1½"	NST (NH)	75	CFB150NST ¹
1½"	NST (NH)	150	HGCFB150NST ²
2½"	NST (NH)	150	CFB250NST ³
2½"	NST (NH)	215	HGCFB250NST ^{2,4}

- ¹ standard flow
- ² high flow
- ³ provided with handles

- gaskets located below
- NYF – New York Fire Dept. Thread 1½" (2.100 ODM X 8 TPI) — 2½" (3.030 ODM X 8 TPI)
- CF – Chicago Fire Dept. Thread 1½" (1.933 ODM X 11.5 TPI) — 2½" (2.990 ODM X 7.5 TPI)
- NYC – New York Corporation Thread 1½" (2.093 ODM X 11 TPI) — 2½" (3.000 ODM X 8 TPI)
- Also available CSA, BAT, NSS



2½" nozzle with handles



2½" nozzle without handles



1½" nozzle

Blue Refinery Fog Nozzles

Features:

- blue polycarbonate with bumper and black plastic and steel stem
- glass-filled
- provides consistent volume at any spray angle
- adjusts from Straight Stream to Fog
- resistant to petrochemicals
- maximum operating pressure: **100 PSI** (water only) at **70°F (21°C)**

Size	Thread	90° Spray GPM @ 100 PSI	Polycarbonate Part #
1½"	NPSH	75	RNB150S
1½"	NST (NH)	75	RNB150NST



Gaskets

Application:

- used on constant flow and refinery fog nozzles

Size	Thread	ID	OD	Thickness	Buna-N Part #
1"	NPSH	0.900"	1.270"	0.125"	CFG100S
1½"	NPSH	1.510"	1.878"	0.125"	CFG150S
2"	NPSH	1.680"	2.340"	0.156"	CFG200S
1"	NST (NH)	0.900"	1.270"	0.125"	CFG100NST
1½"	NST (NH)	1.510"	1.906"	0.125"	CFG150NST
2½"	NST (NH)	2.250"	3.000"	0.187"	CFG250NST

- dimensions are nominal



TriFlow Fog Nozzles



Features:

- corrosion resistant plated aluminum
- combination 170° fog and straight stream
- Venturi flow improves straight stream and gallonage
- no nozzle teeth eliminates fingers and voids in the spray pattern thus producing a dense fog

Size	Thread	GPM @ 100 PSI Straight Stream	6061 T-6 Aluminum Part #
1½"	NST	60-100-140	TFN150NST-140
	NPSH	60-100-140	TFN150-140
1½"	NST	75-150-200	TFN150NST-200
	NPSH	75-150-200	TFN150-200

Econo Fog Nozzles



Features:

- rugged, lightweight, corrosion resistant
- supplied without bumper
- for cabinet use, discourages theft
- for use up to 100 PSI (water only)

Size	Thread	Straight Stream @ 100 PSI	6061-T6 Aluminum Part #
1"	NPSH	56	AFN100
1"	NST	56	AFN100NST
1½"	NPSH	56	AFN150
1½"	NST	56	AFN150NST

Heavy Duty Constant Flow Fog Nozzles



Size	Thread	Length	GPM @ 100 PSI	Fiberglass Reinforced Composite Part #
1½"	NPSH	5"	95	CFFR150
	NST (NH)	5"	95	CFFR150NST

Garden Hose Nozzles



GHN75



GHN75-B

Features:

- offers two straight streams and one fog pattern ¹
- massive bumper specially formulated to resist damage and aging
- corrosion resistant hard coat

Size	Thread	GPM @ 40 PSI Straight Stream		6061-T6 Aluminum Part #
		1st	2nd	
¾"	GHT - without bumper	1-2	3-4	GHN75
	GHT - with bumper	1-2	3-4	GHN75-B

¹ fog pattern is **4-5 GPM @ 40 PSI**

Break Apart Attack Nozzles

Application:

- low-cost, versatile, and easy-to-use nozzle for first responders in rural and suburban fire departments

Features:

- minimal training required to connect and operate the nozzle
- nozzle uses a 1½" coupler, provides **20-90 GPM** fog or straight stream flows at **100 PSI**
- nozzle can be separated from the shut off valve for extended hose lays and other uses
- meets or exceeds USDA Forestry Service standards

Size	Thread	Aluminum Part #
1"	NPSH	ABN100S
	NST (NH)	ABN100F
1½"	NPSH	ABN150S
	NST (NH)	ABN150F



Ball Shut-Off Nozzles - Bolted Style

Features:

- rugged and lightweight
- pistol grip
- hardcoated female swivel inlet and male outlet
- maximum operating pressure: **200 PSI** (water only) at **70°F (21°C)**

Size	Thread	Waterway	Cast Aluminum Part #
1½"	NST (NH)	1⅜"	ACPSO150F
	NPSH	1⅜"	ACPSO150



Pistol Grip Adapters

Features:

- converts any standard fog nozzle to a well-balanced, easy to hold pistol grip fog nozzle making the job of holding high pressure lines easier
- full-time ball bearing swivel base
- corrosion resistant
- hardcoated per MIL-A-8625-F TYPE 111, (Polylube 1)

Size	Thread	6061 T-6 Aluminum Part #
1"	NST	PGA100NST
1½"	NST	PGA150NST
	NPSH	PGA150NPSH
2½"	NST	PGA250NST



Single Gallonage Shut-off Nozzles



Features:

- PTFE hard-coated for greater corrosion resistance and durability
- lightweight and easily maneuvered
- full-time ball bearing swivel base
- metal ball with non-stick Delrin® seats
- 1-1/16" waterway

Size	Thread	Constant GPM @ 100 PSI	Aluminum Part #
1"	NST	95	BVSO100NST
	NPSH	95	BVSO100
1½"	NST	95	BVSO150NST
	NPSH	95	BVSO150
	NST	125	BVSO150NST-125
	NPSH	125	BVSO150-125

Dual Gallonage Shut-off Nozzles



Features:

- PTFE hard-coated for greater corrosion resistance and durability
- lightweight and easily maneuvered
- full-time ball bearing swivel base
- metal ball with non-stick Delrin® seats
- 1-1/16" waterway

Size	Thread	Constant GPM @ 100 PSI	Aluminum Part #
1"	NST	25 - 70	BVDSO100NST
	NPSH	25 - 70	BVDSO100
1½"	NST	25 - 70	BVDSO150NST
	NPSH	25 - 70	BVDSO150

Adjustable Tri-Flo Selectable Gallonage Nozzles



Features:

- corrosion resistant plated with Neoprene bumper
- full-time ball bearing swivel base
- dense fog delivery with no voids or fingers in pattern
- metal ball with non-stick Delrin® seats

Size	Thread	Constant GPM @ 100 PSI	Aluminum Part #
1½"	NST	60 - 100 - 140	BVTSO150NST
	NPSH	60 - 100 - 140	BVTSO150
	NST	75 - 150 - 200	BVTSO150NST-200
	NPSH	75 - 150 - 200	BVTSO150-200
2½"	NST	100 - 200 - 300	BVTSO250NST

Global Forestry Fog Nozzles



Size	Thread	GPM @ 100 PSI Straight Stream		Anodized Aluminum Part #
		1st	2nd	
1½"	NPSH	23.8	73.9	GFN150
	NST (NH)	37.6	95.0	GFN150NST

Forestry Fog Nozzles

Features:

- maroon hard-coated barrel allows for easy identification
- corrosion resistant plated
- dual flow rate nozzles offer two straight stream and two fog patterns
- combination fog and straight stream
- maximum operating pressure: **600 PSI** (water only) at **70°F (21°C)**

Size	Thread	GPM @ 100 PSI Straight Stream		6061-T6 Aluminum Part #
		1st	2nd	
¾"	GHT	1-2	3-4 ¹	FFN75GHT ¹
1"	NPSH	12	25	FFN100 ^{2, 4}
1½"	NPSH	25	70	FFN150
1"	NST (NH)	12	25	FFN100NST
1½"	NST (NH)	25	70	FFN150NST ^{3, 4}

¹ GPM @ 40 PSI

² FFN100 meets USFS 5100-239A and NSN 4210-01-165-6603

³ FFN150NST meets USFS 5100-107A and NSN 4210-01-167-1123

⁴ both nozzles conform to Forestry Service specification 5100-239C and 5100-107a



FFN75GHT



FFN100

Forestry Grade Ball Shut-Off Nozzles

Features:

- NFPA1964 compliant
- hardcoated threads, acetal ball and rigid inlet
- maximum operating pressure: **600 PSI** at ambient temperature **70°F (21°C)**
- FSS specification 5100-238

Size	Thread	Waterway	Anodized Aluminum Part #
1"	NPSH	¾"	FBSO100S
1½"	NPSH	1"	FBSO150S
1"	NST (NH)	¾"	FBSO100F
1½"	NST (NH)	1"	FBSO150F



Forestry Grade Ball Shut-Off Pistol Grip

Features:

- NFPA1964 compliant
- hardcoated threads, acetal ball and full time live swivel inlet
- maximum operating pressure: **600 PSI** at ambient temperature **70°F (21°C)**
- FSS specification 5100-238

Size	Thread	Waterway	Anodized Aluminum Part #
1"	NPSH	¾"	FBSO100S-PG
1½"	NPSH	1"	FBSO150S-PG
1"	NST (NH)	¾"	FBSO100F-PG
1½"	NST (NH)	1"	FBSO150F-PG



Ball Shut-Off Nozzles Tips

Features:

- lightweight
- maximum operating pressure: **200 PSI** (water only) at ambient temperature **70°F (21°C)**
- ½" orifice standard, other sizes available, contact Dixon®

Size	Thread	Length	Orifice	Anodized Aluminum Part #
1"	NPSH	4"	½"	ANT100
1½"	NPSH	4¾"	½"	ANT150
1"	NST (NH)	4"	½"	ANT100F
1½"	NST (NH)	4¾"	½"	ANT150F



NPSH



NST

- Gaskets are special order, please call 877.712.6179 for assistance.

Penetrator Nozzles



Features:

- designed with standard 1½" NPSH male hose threads that are converted to female thread for connection to the hose using a double female rigid connector
- ¼" discharge orifice generates a high velocity water jet that is effective against deep seated wildland fires
- maximum operating pressure: **200 PSI** (water only) at ambient temperature **70°F (21°C)**

Size	Thread	Length	Orifice	Polycarbonate Part #
1½"	NPSH	5½"	¼"	PFN4005S
	NST (NH)	5½"	¼"	PFN4005F

Twin Tip Straight Stream Forestry Nozzles



Features:

- molded high strength red polycarbonate
- solid, one-piece reversible twin tip has ¼" and ⅜" orifices
- maximum operating pressure: **100 PSI** (water only) at ambient temperature **70°F (21°C)**

Size	Thread	Length with tip	Length without tip	Orifice of base nozzle	Polycarbonate Part #
1½"	NPSH	9"	7½"	½"	PTTF150S
	NST (NH)	9"	7½"	½"	PTTF150F

Ball Shut-Off with Nozzle



FNPSO150F-30

FNPSO150S-30

Features:

- flexible design allows nozzle tip to be detached so a mating foam inductor can be inserted between the tip and shut-off valve
- lightweight
- black pistol grip shutoff with nozzle
- maximum operating pressure: **150 PSI** (water / AFFF only) at **70°F (21°C)**

Size	Body Color	Thread	GPM	Polycarbonate Part #
1½"	red	NPSH	30	FNPSO150S-30
	orange	NST (NH)	30	FNPSO150F-30
1½"	red	NPSH	70	FNPSO150S-70
	orange	NST (NH)	70	FNPSO150F-70

Ball Shut-Off Pistol Grips



Features:

- lightweight
- maximum operating pressure: **150 PSI** (water or AFFF only) at ambient temperature **70°F (21°C)**

Size	Thread	Polycarbonate Part #
1½"	NPSH	PPSO150S
	NST (NH)	PPSO150F

Adjust-A-Power Nozzle

Features:

- ideal for patio, auto and boat, driveway and garden
- produces 50% more power than twist nozzles
- does not require a washer
- leave nozzle in the open position when not in use
- brass construction with stainless steel bearings
- maximum operating pressure: **100 PSI** (water only) at ambient temperature **70°F (21°C)**



Thread Size	Brass Part #
3/4" GHT	AAPN75GHT

Constant Flow Nozzle Displays

Features:

- shatterproof and UV resistant polycarbonate withstands tough environmental conditions
- seals used for true water shut off
- easy twist spray pattern adjustment
- sold in case quantity only (25 per case), with display



Thread	45° Spray GPM @ 100 PSI	Color	Global Part #
3/4" GHT	25.1	green	FNB75GHT-GD
	25.1	clear	CNB75GHT-GD

Constant Flow Nozzles with Bumper

Feature:

- can be used as a replacement nozzle in the display case **FNB75GHT-GD**



Thread	45° Spray GPM @ 100 PSI	Color	Plastic Part #
3/4" GHT	8.0	green	GNB75GHT (domestic)
	25.1	clear	CNB75GHT (global)

Double Female Hex Adapters

Feature:

- other configurations are available, consult Dixon® for information



Female Thread	Female NST (NH) Thread	Cast Brass Part #
1½" NPT	1½"	FFH1515F
2½" NPT	2½"	FFH2525F
1½" NST (NH)	1½"	FFH15F15F
2½" NST (NH)	2½"	FFH25F25F

Female Thread	Female NYFD	Cast Brass Part #
1½" NYFD	1½"	FFH15NYFD15NYFD
1½" NPT	1½"	FFH1515NYFD
2½" NPT	2½"	FFH2525NYFD

Female Thread	Female Thread	Cast Brass Part #
1½" NPT	1½" NPSH	FFH15T15S

Female Rocker Lug - Suction Adapter with Poly Screen



Feature:

- suction intake with strainer screen

Female NST (NH) Thread	Female NPT Thread	Cast Brass Part #
2½"	1½"	RSFSA25F15T
	2"	RSFSA25F20T
	2½"	RSFSA250F
	3"	RSFSA25F30T

- All adapters are made to approved Dixon® specifications.
- Replacement washers can be found on page 785

(Open Snoot) Female Swivel Adapters - Pin Lug

Features:

- double female rigid hexagon to swivel connection, rigid end thread is always NPT, hose thread is on swivel end
- finishes: -P polished, -C polished chrome plated
- other configurations are available, consult Dixon® for information

Female Swivel Thread	Female Rigid Thread	Cast Brass Part #
1½" NST (NH)	1½" NPT	SF150F
1½" NPSH	1½" NPT	SF150S
2½" NST (NH)	1½" NPT	SF25F15T
2½" NST (NH)	2" NPT	SF25F20T
2½" NYFD	2½" NPT	SF250NYFD
2½" NST (NH)	2½" NPT	SF250F
2½" NST (NH)	2½" NPT	SF250F-P
2½" NST (NH)	2½" NPT	SF250F-C
2½" NPSH	2½" NPT	SF250S
2½" NST (NH)	3" NPT	SF25F30T
3" NST (NH)	3" NPT	SF300F
3" NYFD	3" NPT	SF300NYFD
4" NST (NH)	4" NPT	SF400F



Domestic Female Swivel Adapters - Pin Lug

Feature:

- other configurations are available, consult Dixon® for information

Female NST (NH) Swivel Thread	Female Rigid NPT Thread	Cast Brass Part #
1½"	1½"	SF150F-D
2½"	2½"	SF250F-D
	2"	SF25F20T-D



(Open Snoot) Female Swivel Adapters - Rocker Lug

Feature:

- other configurations are available, consult Dixon® for information

Female NST (NH) Thread	Female Rigid NPT Thread	Cast Brass Part #
1½"	1½"	RSF150F
2½"	1½"	RSF25F15T
	2"	RSF25F20T
	2½"	RSF250F
	3"	RSF25F30T



- All adapters are made to approved Dixon® specifications.
- Replacement washers can be found on page 785

Double Female Swivels
Pin Lug



Female NPSH Thread	Female NPSH Thread	Cast Brass Part #
1½"	1½"	DFP1515
2½"	2½"	DFP2525

Female NST (NH) Thread	Female NST (NH) Thread	Cast Brass Part #
1½"	1½"	DFP1515F
2½"	2½"	DFP2525F

Female NST (NH) Thread	Female NPSH Thread	Cast Brass Part #
1½"	1½"	DFP15F15S
2½"	2½"	DFP25F25S

Female NYFD Thread	Female NYFD Thread	Cast Brass Part #
1½"	1½"	DFP15NYFD15NYFD
2½"	2½"	DFP25NYFD25NYFD

Rocker Lug



Female NPSH Thread	Female NPSH Thread	Cast Brass Part #
1½"	1½"	DFR1515
2½"	2½"	DFR2525

Female NST (NH) Thread	Female NST (NH) Thread	Cast Brass Part #
1½"	1½"	DFR1515F
2½"	2½"	DFR2525F

Domestic Double Female Swivels - Pin Lug



Female NST (NH) Thread	Female NST (NH) Thread	Cast Brass Part #
1½"	1½"	DFP1515F-D
2½"	2½"	DFP2525F-D

- Replacement washers can be found on page 785

Aluminum Swivel Female x Rigid Female Adapters - Rocker Lug Style N53

Female NPSH Swivel Thread	Female Rigid NPT Thread	Aluminum Extrusion - Anodized Part #
1½"	1½"	N53-15S15T
2"	2"	N53-20S20T
3"	3"	N53-30S30T
6"	6"	N53-60S60T



Female NPSH Swivel Thread	Female Rigid NPSH Thread	Aluminum Extrusion - Anodized Part #
1½"	1½"	N53-15S15S



Female NST (NH) Swivel Thread	Female Rigid NPT Thread	Aluminum Extrusion - Anodized Part #
1½"	1½"	N53-15F15T
2½"	2"	N53-25F20T
	2½"	N53-25F25T
	3"	N53-25F30T
4"	4"	N53-25F40T
	4"	N53-40F40T
4½"	4"	N53-45F40T
	6"	N53-45F60T
5"	6"	N53-50F60T
6"	6"	N53-60F60T



Female NST (NH) Swivel Thread	Female Rigid NST Thread	Aluminum Extrusion - Anodized Part #
1½"	1½"	N53-15F15F
2½"	1½"	N53-25F15F
	2½"	N53-25F25F
	6"	N53-25F60F
4"	4"	N53-40F40F
6"	4½"	N53-60F45F



- All adapters are made to approved Dixon® specifications.
- Replacement washers can be found on page 785

Double Swivel Female Adapters - Rocker Lug
Style N35

Fire Fittings & Accessories



Female NPSH Swivel Thread	Female NPSH Swivel Thread	Aluminum Extrusion - Anodized Part #
1"	1"	N35-10S10S
1½"	1½"	N35-15S15S
2½"	2½"	N35-25S25S
3"	3"	N35-30S30S



Female NST (NH) Swivel Thread	Female NST (NH) Swivel Thread	Aluminum Extrusion - Anodized Part #
1"	1"	N35-10F10F
1½"	1½"	N35-15F15F
	2½"	N35-15F25F
2½"	2½"	N35-25F25F
4"	4"	N35-40F40F
4½"	4½"	N35-45F45F
5"	5"	N35-50F50F
6"	6"	N35-60F60F



Female NPSH Swivel Thread	Female NST Swivel Thread	Aluminum Extrusion - Anodized Part #
1"	1"	N35-10S10F
	1½"	N35-10S15F
1½"	1½"	N35-15S15F
2"	2½"	N35-20S25F
2½"	2½"	N35-25S25F

Aluminum Double Female Swivel Adapters - Long Handle
Style N57



Female NST (NH) Thread	Male NST (NH) Thread	Aluminum Extrusion - Anodized Part #
4½"	6"	N57-45F60F
5"	5"	N57-50F50F
	6"	N57-50F60F
6"	6"	N57-60F60F

- All adapters are made to approved Dixon® specifications.
- Replacement washers can be found on page 785

Hydrant Adapters - Pin Lug

Feature:

- other configurations are also available, consult Dixon® for information

Female Thread	Male Thread	Cast Brass Part #
1½" NPSH	¾" GHT	HA15S76
	¾" NPSH	HA15S75
	¾" NPT	HA15S75T
	1" NPSH	HA15S10S
	1" NPT	HA15S10T
	1½" NPT	HA15S15T
	1½" NST (NH)	HA15S15F
1½" NPT	1½" NPSH	HA15T15S
	1½" NST (NH)	HA15T15F
1½" NST (NH)	¾" GHT	HA1576
	¾" NPSH	HA1575
	¾" NPT	HA1575T
	1" NPSH	HA1510
	1" NST (NH)	HA1510F
	1" NPT	HA1510T
	1½" NPSH	HA1515
	1½" NPT	HA1515T
	1½" NST (NH)	HA1515F
	2½" NST (NH)	HA1525F
2" NPSH	1½" NPSH	HA20S15S
	1½" NPT	HA20S15T
	1½" NST (NH)	HA20S15F
	2½" NST (NH)	HA20S25F
2" NPT	2½" NST (NH)	HA20T25F
2" NST (NH)	2½" NST (NH)	HA2025F
2½" NPSH	1" NPT	HA25S10T
	1½" NPSH	HA25S15S
	1½" NPT	HA25S15T
	1½" NST (NH)	HA25S15F
	2½" NST (NH)	HA25S25F
2½" NST (NH)	¾" GHT	HA2576
	¾" NPT	HA2575T
	1" NPSH	HA2510
	1" NST (NH)	HA2510F
	1" NPT	HA2510T
	1½" NPSH	HA2515
	1½" NST (NH)	HA2515F
	1½" NPT	HA2515T
	2" NPSH	HA2520
	2" NST (NH)	HA2520F
	2" NPT	HA2520T
	2½" NPSH	HA2525
	2½" NST (NH)	HA2525F
	2½" NPT	HA2525T
3" NPSH	HA2530	
3" NST (NH)	HA2530F	
3" NPT	HA2530T	
3" NPSH	2½" NST (NH)	HA30S25F
	2½" NPT	HA30S25T
3" NST (NH)	1½" NPSH	HA3015S
	1½" NST (NH)	HA3015F
	2½" NST (NH)	HA3025F
4" NST (NH)	2½" NST (NH)	HA4025F
4½" NST (NH)	2½" NST (NH)	HA4525F



reducer



same size



increaser

- All adapters are made to approved Dixon® specifications.
- Replacement washers can be found on page 785

Hydrant Adapters - Rocker Lug

Features:

- finishes: -C polished chrome plated
- other configurations are also available, consult Dixon® for information

Fire Fittings & Accessories



reducer



reducer - chrome plated



same size

Female Thread	Male Thread	Cast Brass Part #
1½" NST (NH)	¾" NST (NH)	RHA1576
	1" NST (NH)	RHA1510
	1" NST (NH)	RHA1510F
	1" NPT	RHA1510T
	1½" NPSH	RHA1515
	1½" NST (NH)	RHA1515F
	1½" NPT	RHA1515T
	2" NPSH	RHA1520
	2½" NST (NH)	RHA1525F
	1½" NPSH	¾" NPT
1" NPSH		RHA15S10
1" NPT		RHA15S10T
1½" NST (NH)		RHA15S15F
1½" NPT		RHA15S15T
1½" NPT	1½" NST (NH)	RHA15T15F
2" NST (NH)	2½" NST (NH)	RHA2025F
2½" NST (NH)	¾" GHT	RHA2576
	1" NPSH	RHA2510
	1" NST (NH)	RHA2510F
	1" NPT	RHA2510T
	1½" NPSH	RHA2515
	1½" NST (NH)	RHA2515F
	1½" NPT	RHA2515T
	2" NST (NH)	RHA2520F
	2" NPT	RHA2520T
	2½" NPT	RHA2525T
3" NPT	RHA2530T	
2½" NPSH	1½" NPSH	RHA25S15
	1½" NST (NH)	RHA25S15F
2½" NPT	2½" NST (NH)	RHA25T25F
3" NST (NH)	2½" NST (NH)	RHA3025F

Female x Male Adapters - Long Handle Style N56



Female NST (NH) Thread	Male NST (NH) Thread	Aluminum Extrusion - Anodized Part #
4"	2½"	N56-40F25F
4½"	4"	N56-45F40F
5"	2½"	N56-50F25F
6"	4½"	N56-60F45F
	6"	N56-60F60T¹

¹ female NST (NH) x male NPT

- All adapters are made to approved Dixon® specifications.
- Replacement washers can be found on page 785

Hydrant Adapters - Pin Lugs (New York Threads)

Features:

- NYFD thread = 3.031 x 8 TPI
- NYC thread = 3.00 x 8 TPI
- other configurations are also available, consult Dixon® for information

Female NYFD Thread	Male Thread	Cast Brass Part #
1½"	¾" GHT	HA15NYFD76
2½"	¾" NPT	HA25NYFD75T
	¾" GHT	HA25NYFD76
	1½" NPSH	HA25NYFD15S
	1½" NST (NH)	HA25NYFD15F
	1½" NPT	HA25NYFD15T
	1½" NYFD	HA25NYFD15NYFD
	2" NPT	HA25NYFD20T
	2½" NST (NH)	HA25NYFD25F

Female NYC Thread	Male Thread	Cast Brass Part #
2½"	¾" GHT	HA25NYC76
	1" NPT	HA25NYC10T
	1½" NPT	HA25NYC15T
	2" NPT	HA25NYC20T



reducer



same size



increaser

Hazmat Adapters - Pin Lugs

Feature:

- divides single stream into double stream

Female NST Thread	Male Thread	Cast Brass Part #
1½"	(2) ¾" GHT	HHA1576
2½"	(2) ¾" GHT	HHA2576



Domestic Hydrant Adapters - Pin Lug

Feature:

- other configurations are available, consult Dixon® for information

Female NST (NH) Thread	Male Thread	Cast Brass Part #
1½"	¾" GHT	HA1576-D
2½"	1" NPT	HA2510T-D
	1½" NST (NH)	HA2515F-D
	1½" NPT	HA2515T-D
	¾" GHT	HA2576-D



- All adapters are made to approved Dixon® specifications.
- Replacement washers can be found on page 785

Hydrant Adapters - Rocker Lug

Features:

- use with water
- maximum working pressure: **100 PSI at 70°F (21°C)**

Female Thread	Male Thread	Polycarbonate Part #
1½" NPSH	1½" NST (NH)	POLYHA15S15F
2½" NST (NH)	¾" GHT	POLYHA2576
	1½" NPSH	POLYHA2515
	1½" NST (NH)	POLYHA2515F
	2" NPT	POLYHA2520T

Fire Fittings & Accessories



Domestic Female to Male Hex Nipples

Feature:

- other configurations are available, consult Dixon® for information

Female Thread	Male Thread	Cast Brass Part #
1" NPT	1½" NST (NH)	FM1015F-D
1½" NPT	1½" NST (NH)	FM1515F-D
	2½" NST (NH)	FM1525F-D
1½" NST (NH)	1½" NPSH	FM15F15S-D
	1½" NPT	FM15F15T-D
	2½" NST (NH)	FM15F25F-D
1½" NPSH	1½" NST (NH)	FM15S15F-D
	1½" NPT	FM15S15T-D
2" NPT	1½" NST (NH)	FM2015F-D
2½" NPT	2½" NST (NH)	FM2525F-D
2½" NST (NH)	1½" NST (NH)	FM25F15F-D
	1½" NPT	FM25F15T-D
	2½" NPT	FM25F25T-D



reducer



same size



increaser

- All adapters are made to approved Dixon® specifications.
- Replacement washers can be found on page 785

Single Male Outlet with Hex (open snoot)

Application:

- used to connect fire hose to a standpipe or sprinkler system

Features:

- finishes: -P polished, -C polished chrome plated
- other sizes, threads and configurations are available, consult Dixon® for information

Female NPT Thread	Male Thread	Cast Brass Part #
2½"	2½" NST (NH)	MOC250F-P
	2½" NST (NH)	MOC250F-C
3"	2½" NST (NH)	MOC3025F-P
	2½" NST (NH)	MOC3025F-C
	3" NST (NH)	MOC300F-P
Female NPT Thread	Male Thread	Cast Brass Part #
2½"	2½" NYC	MOC250NYC-P
	2½" NYFD	MOC250NYFD-P



polished



polished chrome plated

Fire Fittings & Accessories

Female to Male Hex Nipples

Feature:

- other configurations are also available, consult Dixon® for information

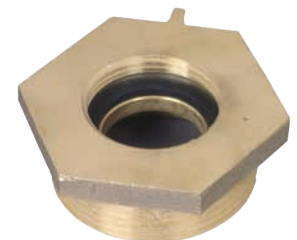
Female Thread	Male Thread	Cast Brass Part #
¾" GHT	1" NPT	FM7610T
1" NPSH	¾" GHT	FM10S76
	¾" GHT	FM1076
1" NPT	1" NPSH	FM1010
	1" NST (NH)	FM1010F
	1½" NPSH	FM1015
	1½" NST (NH)	FM1015F
1" NST (NH)	1" NPT	FM10F10T
1½" NPT	1½" NPSH	FM1515
	1½" NST (NH)	FM1515F
	2½" NST (NH)	FM1525F
1½" NST (NH)	1½" NPSH	FM15F15S
	1½" NPT	FM15F15T
	2" NPT	FM15F20T
	2½" NPT	FM15F25T
	2½" NST (NH)	FM15F25F
	1½" NST (NH)	FM15F15F
1½" NPSH	1½" NST (NH)	FM15S15F
	1½" NPT	FM15S15T
	2" NPT	FM15S20T
2" NPSH	1½" NPSH	FM20S15
	1½" NST (NH)	FM20S15F
	1½" NPT	FM20S15T
	2" NPT	FM20S20T
	2½" NST (NH)	FM20S25F
2" NPT	1½" NPSH	FM2015
	1½" NST (NH)	FM2015F
	2" NPSH	FM2020
	2½" NST (NH)	FM2025F
2½" NST (NH)	¾" NPT	FM25F75T
	1" NPT	FM25F10T
	1½" NST (NH)	FM25F15F
	1½" NPT	FM25F15T
	2" NPT	FM25F20T
2½" NPT	1½" NST (NH)	FM2515F
	2½" NPSH	FM2525
	2½" NST (NH)	FM2525F



reducer



same size



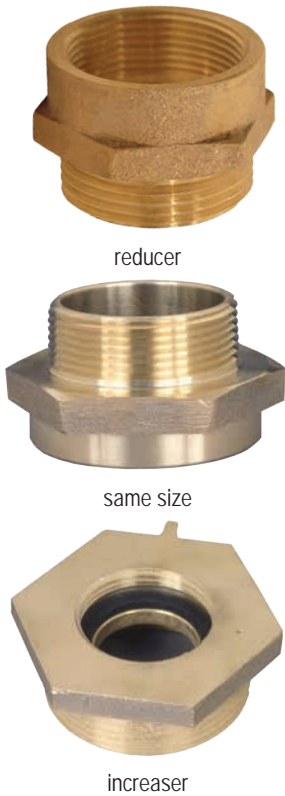
increaser

Table continued on next page

- All adapters are made to approved Dixon® specifications.
- Replacement washers can be found on page 785

Female to Male Hex Nipples

Table continued from previous page



Female Thread	Male Thread	Cast Brass Part #
2½" NST (NH)	2½" NST (NH)	FM25F25F
	2½" NPT	FM25F25T
	3" NST (NH)	FM25F30F
	3" NPT	FM25F30T
	2½" NPSH	FM25F25S
2½" NPT	2½" NPT	FM2525T
2½" NPSH	2½" NST (NH)	FM25S25F
	2½" NPT	FM25S25T
3" NPT	2½" NST (NH)	FM3025F
	2½" NPT	FM3025T
	3" NST (NH)	FM3030F
3" NST (NH)	2½" NST (NH)	FM30F25F
	2½" NPT	FM30F25T
	3" NPT	FM30F30T
3" NPSH	2½" NST (NH)	FM30S25F
4" NPT	2½" NST (NH)	FM4025F
	4" NST (NH)	FM4040F
	4½" NST (NH)	FM4045F
4" NST (NH)	4" NPT	FM40F40T
4½" NST (NH)	4" NPT	FM45F40T
6" NPT	6" NST (NH)	FM6060F
6" NST (NH)	6" NPT	FM60F60T

Female to Male Hex Nipples (New York Threads)

Features:

- NYFD thread = 3.031 x 8 TPI
- NYC thread = 3.00 x 8 TPI
- other configurations are available, consult Dixon® for information



Female Thread	Male Thread	Cast Brass Part #
1½" NPT	1½" NYFD	FM1515NYFD
1½" NST (NH)	1½" NYFD	FM15F15NYFD
1½" NYFD	1½" NST (NH)	FM15NYFD15F
	1½" NPT	FM15NYFD15T
Female Thread	Male Thread	Cast Brass Part #
2½" NPT	2½" NYC	FM2525NYC
	2½" NYFD	FM2525NYFD
2½" NST (NH)	2½" NYC	FM25F25NYC
	2½" NYFD	FM25F25NYFD
2½" NYC	2½" NST (NH)	FM25NYC25F
	2½" NPT	FM25NYC25T
2½" NYFD	2½" NST (NH)	FM25NYFD25F
	2½" NPT	FM25NYFD25T
Female NYFD Thread	Male Thread	Cast Brass Part #
2½"	1½" NPT	FM25NYFD15T
	2" NPT	FM25NYFD20T
	3" NPT	FM25NYFD30T

- All adapters are made to approved Dixon® specifications.
- Replacement washers can be found on page 785

Female x Male Adapters - Rocker Lug
Style N37

Female Thread	Male Thread	Aluminum Extrusion - Anodized Part #
3/4" GHT	1" NST (NH)	N37-07G10F
	1" NPSH	N37-07G10S
	1" NPT	N37-07G10T
	1 1/2" NST (NH)	N37-07G15F
	1 1/2" NPSH	N37-07G15S
1" NST	3/4" GHT	N37-10F07G
	1" NPSH	N37-10F10S
	1" NPT	N37-10F10T
	1 1/2" NST (NH)	N37-10F15F
	1 1/2" NPSH	N37-10F15S
1" NPSH	2 1/2" NST (NH)	N37-10F25F
	3/4" GHT	N37-10S07G
	3/4" NPSH	N37-10S07S
	1" NST (NH)	N37-10S10F
1" NPT	1" NPT	N37-10S10T
	1 1/2" NST (NH)	N37-10S15F
	1 1/2" NPSH	N37-10S15S
	1" NST	N37-10T10F
1 1/2" NST (NH)	3/4" GHT	N37-15F07G
	3/4" NPT	N37-15F07T
	1" NST (NH)	N37-15F10F
	1" NPSH	N37-15F10S
	1" NPT	N37-15F10T
	1 1/2" NST (NH)	N37-15F15F
	1 1/2" NPSH	N37-15F15S
	1 1/2" NPT	N37-15F15T
	2" NPT	N37-15F20T
	2 1/2" NST (NH)	N37-15F25F
1 1/2" NPSH	3/4" GHT	N37-15S07G
	1" NST (NH)	N37-15S10F
	1 1/2" NST (NH)	N37-15S15F
	1 1/2" NPT	N37-15S15T
1 1/2" NPT	2" NPT	N37-15S20T
	1 1/2" NST (NH)	N37-15T15F
	1 1/2" NPSH	N37-15T15S
2" NPSH	2 1/2" NST (NH)	N37-15T25F
	3/4" GHT	N37-20S07G
	1 1/2" NST (NH)	N37-20S15F
	1 1/2" NPSH	N37-20S15S
	2" NPT	N37-20S20T
2" NPT	2 1/2" NST (NH)	N37-20S25F
	1 1/2" NST (NH)	N37-20T15F
	1 1/2" NPSH	N37-20T15S
	2 1/2" NST (NH)	N37-20T25F



reducer



same size



increaser

Fire Fittings & Accessories

Table continued on next page

- All adapters are made to approved Dixon® specifications.
- Replacement washers can be found on page 785

Female x Male Adapters - Rocker Lug (continued)
Style N37

Table continued from previous page

Female Thread	Male Thread	Aluminum Extrusion - Anodized Part #
2½" NST (NH)	¾" GHT	N37-25F07G
	¾" NPT	N37-25F07T
	1" NPT	N37-25F10T
	1½" NST (NH)	N37-25F15F
	1½" NPSH	N37-25F15S
	1½" NPT	N37-25F15T
	2" NPT	N37-25F20T
	2½" NST (NH)	N37-25F25F
	2½" NPSH	N37-25F25S
	2½" NPT	N37-25F25T
	3" NST (NH)	N37-25F30F
3" NPT	N37-25F30T	
2½" NPSH	1½" NPSH	N37-25S15S
	2½" NST (NH)	N37-25S25F
	2½" NPT	N37-25S25T
2½" NPT	1½" NPSH	N37-25T15S
	2½" NST (NH)	N37-25T25F
	3" NPT	N37-25T30T
3" NST (NH)	1½" NST (NH)	N37-30F15F
	2½" NST (NH)	N37-30F25F
	3" NPT	N37-30F30T
	2½" NST (NH)	N37-30S25F
3" NPT	2½" NST (NH)	N37-30T25F
	2½" NPT	N37-30T25T
4" NST (NH)	2½" NST (NH)	N37-40F25F
	4" NST (NH)	N37-40F40F
	4" NPT	N37-40F40T
	6" NST (NH)	N37-40F60F
4" NPT	2½" NST (NH)	N37-40T25F
	4" NST (NH)	N37-40T40F
	4½" NST (NH)	N37-40T45F
4½" NST (NH)	2½" NST (NH)	N37-45F25F
	4" NST (NH)	N37-45F40F
	4" NPT	N37-45F40T
	5" NST (NH)	N37-45F50F
5" NST (NH)	4½" NST (NH)	N37-50F45F
	5" NPT	N37-50F50T
	6" NST (NH)	N37-50F60F
5" NPSH	6" NST (NH)	N37-50S60F
5" NPT	5" NST (NH)	N37-50T50F
6" NST (NH)	4" NPT	N37-60F40T
	5" NST (NH)	N37-60F50F
	6" NPT	N37-60F60T
6" NPT	4" NST (NH)	N37-60T40F
	6" NST (NH)	N37-60T60F

Fire Fittings & Accessories



- All adapters are made to approved Dixon® specifications.
- Replacement washers can be found on page 785

Brass Female Swivel to Male Adapters
Pin Lug

Female NST (NH) Thread	Male NPT Thread	Cast Brass Part #
1½"	1½"	SM150F
2½"	1½"	SM25F15T
	2"	SM25F20T
	2½"	SM250F
	3"	SM25F30T
4"	4"	SM400F

Female NPSH Thread	Male NPT Thread	Cast Brass Part #
1½"	1½"	SM150S
2"	2"	SM200S
2½"	2½"	SM250S

Female Thread	Male NST (NH) Thread	Cast Brass Part #
1½" NPSH	1½"	SM15S15F
2½" NST (NH)	3"	SM25F30F

Female Thread	Male NPT Thread	Cast Brass Part #
1½" NYFD	1½"	SM150NYFD
2½" NYFD	2½"	SM250NYFD



Rocker Lug

Female Thread	Male NPT Thread	Cast Brass Part #
1½" NST (NH)	1½"	RSM150F
1½" NPSH	1½"	RSM150S
2½" NST (NH)	2"	RSM25F20T
	2½"	RSM250F
	3"	RSM25F30T



Domestic Male Swivel Adapters - Pin Lug

Female NST (NH) Swivel Thread	Male NPT Thread	Cast Brass Part #
1½"	1½"	SM150F-D
2½"	2½"	SM250F-D
	2"	SM25F20T-D
	3"	SM25F30T-D



- All adapters are made to approved Dixon® specifications.
- Replacement washers can be found on page 785

Male Rocker Lug - Suction with Poly Screen



Feature:

- suction intake with strainer screen

Female NST (NH) Thread	Male NPT Thread	Cast Brass Part #
2½"	2" 2½" 3"	RSMSA25F20T RSMSA250F RSMSA25F30T

Male Rocker Lug - Suction with Zinc Screen



Feature:

- suction intake with zinc strainer screen - excellent to use before backflow preventers

Female NST (NH) Thread	Male NPT Thread	Cast Brass Part #
2½"	2" 2½" 3"	RSMSA25F20T-Z RSMSA250F-Z RSMSA25F30T-Z

Male Rocker Lug - Suction with Poly Screen



Feature:

- suction intake with strainer screen

Female NST (NH) Thread	Male NPT Thread	Aluminum Part #
2½"	2" 2½"	ARMSA25F20T ARMSA250F

- All adapters are made to approved Dixon® specifications.
- Replacement washers can be found on page 785

Female Swivel to Male Adapters - Rocker Lug Style N54

Female Swivel Thread	Male Rigid Thread	Aluminum Extrusion - Anodized Part #
1½" NST (NH)	1½" NST (NH)	N54-15F15F
	1½" NPT	N54-15F15T
	2½" NST (NH)	N54-15F25F
1½" NPSH	1½" NPSH	N54-15S15S
	1½" NPT	N54-15S15T
2½" NST (NH)	1½" NST (NH)	N54-25F15F
	1½" NPT	N54-25F15T
	2" NPT	N54-25F20T
	2½" NST (NH)	N54-25F25F
	2½" NPT	N54-25F25T
	3" NPT	N54-25F30T
2½" NPSH	2" NPT	N54-25S20T
3" NPSH	3" NPT	N54-30S30T
4" NST (NH)	4" NST (NH)	N54-40F40F
	4" NPT	N54-40F40T
	6" NST (NH)	N54-40F60F
4½" NST (NH)	4" NPT	N54-45F40T
	6" NPT	N54-45F60T
6" NST (NH)	6" NPT	N54-60F60T



Female Swivel to Male Adapters - Long Handle Style N54L

Female NST Thread	Male Thread	Aluminum Extrusion - Anodized Part #
2½"	2½" NST (NH)	N54L-25F25F
4"	6" NST (NH)	N54L-40F60F
4½"	4" NPT	N54L-45F40T
6"	4" NPT	N54L-60F40T
	5" NST (NH)	N54L-60F50F
	6" NPT	N54L-60F60T



- All adapters are made to approved Dixon® specifications.
- Replacement washers can be found on page 785

Double Male Hex Nipples

Feature:

- other configurations are available, consult Dixon® for information



reducer



same size



increaser

Male Thread	Male Thread	Cast Brass Part #
¾" NPT	1½" NPSH	DMH7515
	1½" NST (NH)	DMH7515F
1" NPT	¾" GHT	DMH1076
	1" NPSH	DMH1010
	1" NST (NH)	DMH1010F
	1½" NPSH	DMH1015
	1½" NST (NH)	DMH1015F
	2½" NST (NH)	DMH1025F
1½" NPSH	1½" NPSH	DMH15S15S
1½" NPT	1" NPSH	DMH1510
	1" NST (NH)	DMH1510F
	1½" NPSH	DMH1515
	1½" NPT	DMH1515T
	1½" NST (NH)	DMH1515F
	2" NPSH	DMH1520
	2½" NST (NH)	DMH1525F
1½" NST (NH)	1½" NPSH	DMH15F15S
	1½" NST (NH)	DMH15F15F
	2½" NST (NH)	DMH15F25F
2" NPT	1½" NPSH	DMH2015
	1½" NST (NH)	DMH2015F
	2" NPSH	DMH2020
	2½" NPSH	DMH2025
	2" NPT	DMH2020T
	2½" NST (NH)	DMH2025F
2½" NPT	1½" NPSH	DMH2515
	1½" NST (NH)	DMH2515F
	2" NPSH	DMH2520
	2½" NPSH	DMH2525
	2½" NST (NH)	DMH2525F
	2½" NPT	DMH2525T
	3" NPSH	DMH2530
	3" NPT	DMH2530T
3" NST (NH)	DMH2530F	
2½" NST (NH)	2½" NST (NH)	DMH25F25F
	3" NST (NH)	DMH25F30F
3" NPT	2½" NPSH	DMH3025
	2½" NST (NH)	DMH3025F
	3" NPSH	DMH3030
	3" NST (NH)	DMH3030F
3" NPT	3" NPT	DMH3030T
4" NPT	4" NPSH	DMH4040
4" NST (NH)	4" NST	DMH40F40F
4" NPT	4" NST (NH)	DMH4040F
	4½" NST (NH)	DMH4045F
	4" NPT	DMH4040T
5" NPT	5" NST (NH)	DMH5050F
6" NPT	4½" NST (NH)	DMH6045F
	6" NST (NH)	DMH6060F
	6" NPSH	DMH6060
	6" NPT	DMH6060T

- All adapters are made to approved Dixon® specifications.

Double Male Hex Adapters (NYFD Threads)

Feature:

- other configurations are available, consult Dixon® for information

Male Thread	Male NYFD Thread	Cast Brass Part #
1½" NPT	1½"	DMH1515NYFD
1½" NST (NH)	1½"	DMH15F15NYFD
1½" NPT	2½"	DMH1525NYFD
2" NPT	2½"	DMH2025NYFD
2½" NPT	1½"	DMH2515NYFD
2½" NPT	2½"	DMH2525NYFD

Male NST (NH) Thread	Male NYFD Thread	Cast Brass Part #
2½"	2½"	DMH25F25NYFD

Male NYFD Thread	Male NYFD Thread	Cast Brass Part #
1½"	1½"	DMH15NYFD15NYFD
2½"	2½"	DMH25NYFD25NYFD

- NYFD thread: 3.031 x 8 TPI



reducer



same size



increaser

- All adapters are made to approved Dixon® specifications.

Domestic Double Male Hex Adapters

Fire Fittings & Accessories



reducer



same size



increaser

Feature:

- other configurations are available, consult Dixon® for information

Male Thread	Male Thread	Cast Brass Part #
1" NPT	1" NST (NH)	DMH1010F-D
	1½" NST (NH)	DMH1015F-D
1½" NPT	1½" NPSH	DMH1515-D
	1½" NST (NH)	DMH1515F-D
	2½" NST (NH)	DMH1525F-D
1½" NST (NH)	1½" NST (NH)	DMH15F15F-D
	1½" NPSH	DMH15F15S-D
	2½" NST (NH)	DMH15F25F-D
2" NPT	1½" NST (NH)	DMH2015F-D
	2" NPSH	DMH2020-D
	2½" NST (NH)	DMH2025F-D
2½" NPT	1½" NST (NH)	DMH2515F-D
	2½" NST (NH)	DMH2525F-D
2½" NST (NH)	2½" NST (NH)	DMH25F25F-D
		DMH3025F-D
3" NPT	2½" NST (NH)	DMH3030F-D
	3" NST (NH)	DMH3030F-D
4" NPT	4½" NST (NH)	DMH4045F-D
	6" NST (NH)	DMH6060F-D

Double Male Adapters

Feature:

- other configurations are available, consult Dixon® for information

Pin Lug



Male Thread	Male Thread	Cast Brass Part #
1½" NST (NH)	1½" NST (NH)	DMP1515F
	1½" NPT	DMP15F15T
1½" NPSH	1½" NPSH	DMP1515
	1½" NPT	DMP15S15T
1½" NST (NH)	1½" NPSH	DMP15F15S
2½" NST (NH)	2½" NST (NH)	DMP2525F
	2½" NPSH	DMP25F25S
	2½" NPT	DMP25F25T
2½" NPSH	2½" NPSH	DMP2525

Rocker Lug



Male Thread	Male Thread	Cast Brass Part #
1½" NST (NH)	1½" NST (NH)	DMR1515F
	1½" NPT	DMR15F15T
	1½" NPSH	DMR15F15S
1½" NPSH	1½" NPSH	DMR1515
	1½" NPT	DMR15S15T
2½" NST (NH)	2½" NST (NH)	DMR2525F
	2½" NPSH	DMR2525

- All adapters are made to approved Dixon® specifications.

Double Male Adapters - Rocker Lug
Style N36

Male NST (NH) Thread	Male Thread	Aluminum Extrusion - Anodized Part #
1"	1" NST (NH)	N36-10F10F
1½"	1½" NST (NH)	N36-15F15F
	2" NPT	N36-15F20T
	2½" NST (NH)	N36-15F25F
2½"	2½" NST (NH)	N36-25F25F
	3" NST (NH)	N36-25F30F
	3" NPT	N36-25F30T
	4" NST (NH)	N36-25F40F
	4" NPT	N36-25F40T
	4½" NST (NH)	N36-25F45F
3"	3" NST (NH)	N36-30F30F
4"	4" NST (NH)	N36-40F40F
4½"	4½" NST (NH)	N36-45F45F
6"	6" NST (NH)	N36-60F60F

Male NPT Thread	Male Thread	Aluminum Extrusion - Anodized Part #
1½"	1½" NST (NH)	N36-15T15F
	2½" NST (NH)	N36-15T25F
2"	2" NPT	N36-20T20T
	2½" NST (NH)	N36-20T25F
2½"	2½" NST (NH)	N36-25T25F
	3" NPT	N36-25T30T
	4" NPT	N36-25T40T
3"	3" NST (NH)	N36-30T30F
4"	4" NST (NH)	N36-40T40F
	4½" NST (NH)	N36-40T45F
5"	6" NPT	N36-50T60T
6"	6" NST (NH)	N36-60T60F

Male NPSH Thread	Male Thread	Aluminum Extrusion - Anodized Part #
1"	1" NPSH	N36-10S10S
1½"	1½" NST (NH)	N36-15S15F
	1½" NPSH	N36-15S15S
	1½" NPT	N36-15S15T
	2" NPSH	N36-15S20S
2½"	2½" NST (NH)	N36-25S25F
	2½" NPSH	N36-25S25S



same size



increaser

Cam and Groove Hydrant Adapters

Features:

- pin lugs allow for easy connection using standard spanner and hydrant wrenches on pages 799 - 802
- supplied with a Buna-N washer in the threaded end

Female NST (NH) Thread	Male Adapter	Brass Part #	Aluminum Part #
1½"	1½"	HA1515ADP	AHA1515ADP
2½"	2½"	HA2525ADP	AHA2525ADP



Replacement Washers

ID	OD	Thickness	Buna-N Part #
1-9/16"	2-1/16"	1/8"	SW150
2-9/16"	3-3/16"	3/16"	SW250



- All adapters are made to approved Dixon® specifications.

Cam and Groove x NST

Features:

- powder coated aluminum adapter
- for suction and low pressure discharge only
- other sizes, configurations and materials available, contact Dixon® for information



Type A x Female NST (NH)

Adapter Size	Female NST (NH) Thread	Aluminum Part #
1½"	1½"	G150-A-ALNST
2½"	2½"	G250-A-ALNST
3"	2½"	3025-A-ALNST

Type B x Male NST (NH)

Feature:

- Buna seals standard



Coupler Size	Male NST (NH) Thread	Aluminum Part #
1½"	1½"	G150-B-ALNST
2"	1½"	2015-B-ALNST
2½"	2½"	G250-B-ALNST
3"	2½"	3025-B-ALNST

Type D x Female NST (NH)

Feature:

- Buna seals standard



Coupler Size	Female NST (NH) Thread	Aluminum Part #
1½"	1½"	G150-D-ALNST
2"	2½"	2025-D-ALNST
2½"	2½"	G250-D-ALNST
3"	2½"	3025-D-ALNST


Type F x Male NST (NH)



Adapter Size	Male NST (NH) Thread	Aluminum Part #
1½"	1½"	G150-F-ALNST
2"	2½"	2025-F-ALNST
2½"	2½"	G250-F-ALNST
3"	2½"	3025-F-ALNST

Brass Caps Pin Lug

Features:

- finishes: -P polished, -C polished chrome plated
- NOT intended for pressure applications - for debris and thread protection only 

NST (NH) Thread	Cast Brass Part #
1½"	FC150F FC150F-P FC150F-C
2"	FC200F FC250F FC250F-P FC250F-C
2½"	FC300F FC400F FC450F FC600F
3"	
4"	
4½"	
6"	
NPSH Thread	Cast Brass Part #
1½"	FC150
2"	FC200
2½"	FC250
3"	FC300
4"	FC400
6"	FC600



Rocker Lug

Feature:

- finishes: -P polished, -C polished chrome plated

NST (NH) Thread	Cast Brass Part #
1"	RFC100F
1½"	RFC150F
2½"	RFC250F RFC250F-C
NPSH Thread	Cast Brass Part #
¾"	RFC075
1"	RFC100
1½"	RFC150
2"	RFC200
2½"	RFC250



Brass Test Caps

Features:

- pet cock port supplied with ⅛" NPT
- drain cock port supplied with ¼" NPT

NST (NH) Thread	Brass Part #
2½"	NST250TC



Aluminum Caps with Cable

Rocker Lug

Features:

- other configurations are available, consult Dixon® for information, not all configurations are stocked
- aircraft cable (coated) included

Size	Thread	Extruded Hardcoated Aluminum Part #
1"	NST (NH)	CAP100F-C
1½"		CAP150F-C
2"		CAP200F-C
2½"		CAP250F-C
3"		CAP300F-C
4"		CAP400F-C
4½"		CAP450F-C
5"		CAP500F-C
6"	CAP600F-C	
1"	NPSH	CAP100S-C
1½"		CAP150S-C
2"		CAP200S-C
2½"		CAP250S-C

Fire Fittings & Accessories



Long Handle

NST (NH) Thread	Extruded Hardcoated Aluminum Part #
4"	CAP400F-C-LH
4½"	CAP450F-C-LH
5"	CAP500F-C-LH
6"	CAP600F-C-LH



Aluminum Test Caps

Feature:

- supplied with ¼" NPT drill and tap

Size	Thread	Aluminum Part #
1½"	NST (NH)	CAP150FABS
2"		CAP200FABS
2½"		CAP250FABS
3"		CAP300FABS
4"		CAP400FABS
4½"		CAP450FABS
5"		CAP500FABS
6"		CAP600FABS
1½"	NPSH	CAP150SABS
2"		CAP200SABS
2½"		CAP250SABS
3"		CAP300SABS
4"		CAP400SABS
4½"		CAP450SABS
5"		CAP500SABS
6"		CAP600SABS

