

## T600AA

### Hard Wall Marine Exhaust Hose USCG/SAE J1527 A2/B2



**Applications:**

Fuel, oil and hydraulic fluids suction and discharge. Suitable for exhaust gas from water cooled stationary or marine diesel engines. Offers maximum flexibility.

**Cover:**

Black NBR/PVC blend – abrasion, ozone, hydrocarbon and fire resistant.

**Reinforcement:**

High tensile textile cords with flexible steel helix wire.

**Tube:**

Black NBR – exhaust gas, fuel and fire resistant.

**Working Pressure:**

Constant Pressure – 2 Bar (30 PSI)

**Temperature Range:**

-4°F (-20°C) to 212°F (+100°C)

**Branding:**

ALFAGOMMA – ITALY T600 MARINE EXHAUST/FUEL S & D – <SIZE> – USCG/SAE J1527 TYPE A2 (in red letters)

**Standard Length:**

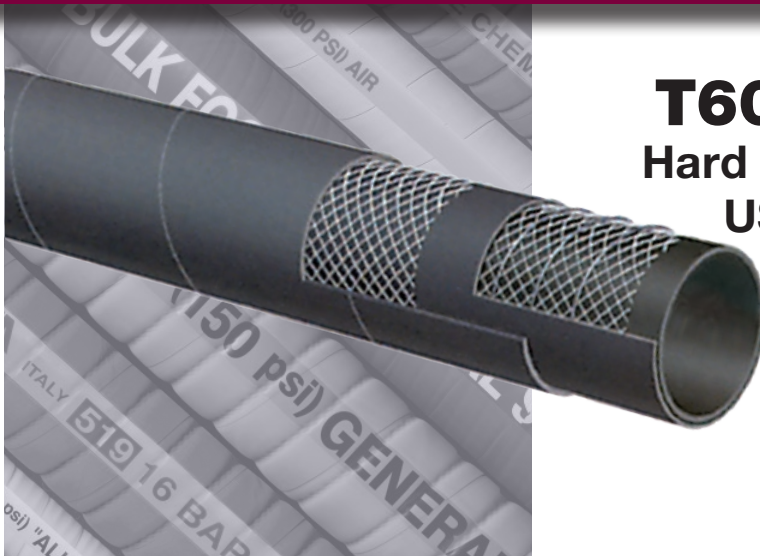
25 or 50 feet

### Nominal Specifications

Series	ID (in.)	ID (mm)	OD (in.)	OD (mm)	Max Rec. WP (PSI)	Vacuum HG (in.)	Min. Bending Radius (in. @ 68°F)	Weight (lbs./ft.)
T600AA062	5/8	16	1.02	26	30	30	2	0.36
T600AA075	3/4	19	1.14	29	30	30	2 1/4	0.44
T600AA087	7/8	22	1.26	32	30	30	2 3/4	0.50
T600AA100	1	25	1.38	35	30	30	3	0.56
T600AA112	1 1/8	28	1.50	38	30	30	3 1/4	0.60
T600AA125	1 1/4	32	1.65	42	30	30	3 3/4	0.65
T600AA137	1 3/8	35	1.77	45	30	30	4 1/4	0.70
T600AA150	1 1/2	38	1.89	48	30	30	4 1/2	0.76
T600AA162	1 5/8	42	2.17	52	30	30	5	0.81
T600AA175	1 3/4	45	2.16	55	30	30	5 1/4	0.87
T600AA189	1 7/8	48	2.28	58	30	30	5 3/4	0.91
T600AA200	2	51	2.40	61	30	30	6	0.99
T600AA225	2 1/4	57	2.64	67	30	30	6 3/4	1.09
T600AA238	2 3/8	60	2.76	70	30	27	7	1.25
T600AA250	2 1/2	63	2.87	73	30	27	7 1/2	1.31

continued

BECAUSE WE CONTINUALLY EXAMINE WAYS TO IMPROVE OUR PRODUCTS, WE RESERVE THE RIGHT TO ALTER SPECIFICATIONS OR DISCONTINUE PRODUCTS WITHOUT PRIOR NOTICE.



**T600AA (continued)**  
**Hard Wall Marine Exhaust Hose**  
**USCG/SAE J1527 A2/B2**

**Nominal Specifications**

Series	ID (in.)	ID (mm)	OD (in.)	OD (mm)	Max Rec. WP (PSI)	Vacuum HG (in.)	Min. Bending Radius (in. @ 68°F)	Weight (lbs./ft.)
T600AA275	2 3/4	70	3.11	80	30	27	8 1/4	1.41
T600AA300	3	76	3.39	86	30	27	9	1.53
T600AA350	3 1/2	90	3.94	100	30	27	10 1/2	1.91
T600AA400	4	102	4.41	112	30	27	12	2.12
T600AA450	4 1/2	115	5.00	127	30	27	13 1/2	2.72
T600AA500	5	127	5.55	141	30	24	15	3.04

BECAUSE WE CONTINUALLY EXAMINE WAYS TO IMPROVE OUR PRODUCTS, WE RESERVE THE RIGHT TO ALTER SPECIFICATIONS OR DISCONTINUE PRODUCTS WITHOUT PRIOR NOTICE.

## T653AA Soft Wall Marine Exhaust Hose – SAE J2006 R1



**Applications:**

Marine wet exhaust and bilge pump connections.

**Cover:**

Black Synthetic Rubber – abrasion, ozone and hydrocarbon resistant.

**Reinforcement:**

High tensile textile cords.

**Tube:**

Black Synthetic Rubber.

**Working Pressure:**

Constant Pressure – 5 Bar (75 PSI)

**Temperature Range:**

-22°F (-30°C) to 212°F (+100°C)

**Branding:**

ALFAGOMMA – ITALY – T653 SOFT WALL MARINE WET EXHAUST SAE J2006 R1 <SIZE> <YYYY MFG> (in blue letters)

**Standard Length:**

12 1/2 feet in straight lengths

### Nominal Specifications

Series	ID (in.)	ID (mm)	OD (in.)	OD (mm)	Max Rec. WP (PSI)	Weight (lbs./ft.)
T653AA100	1	25	1.38	35	75	0.43
T653AA112	1 1/8	28	1.50	38	75	0.47
T653AA125	1 1/4	32	1.65	42	75	0.52
T653AA137	1 3/8	35	1.77	45	75	0.56
T653AA150	1 1/2	38	1.89	48	75	0.61
T653AA162	1 5/8	42	2.05	52	75	0.66
T653AA175	1 3/4	45	2.17	55	75	0.70
T653AA189	1 7/8	48	2.28	58	75	0.75
T653AA200	2	51	2.48	63	75	0.97
T653AA225	2 1/4	57	2.72	69	75	1.07
T653AA238	2 3/8	60	2.91	74	75	1.31
T653AA250	2 1/2	63	3.03	77	75	1.37
T653AA300	3	76	3.54	90	75	1.64
T653AA350	3 1/2	90	4.09	104	75	1.95
T653AA400	4	102	4.57	116	75	2.18

continued

BECAUSE WE CONTINUALLY EXAMINE WAYS TO IMPROVE OUR PRODUCTS, WE RESERVE THE RIGHT TO ALTER SPECIFICATIONS OR DISCONTINUE PRODUCTS WITHOUT PRIOR NOTICE.

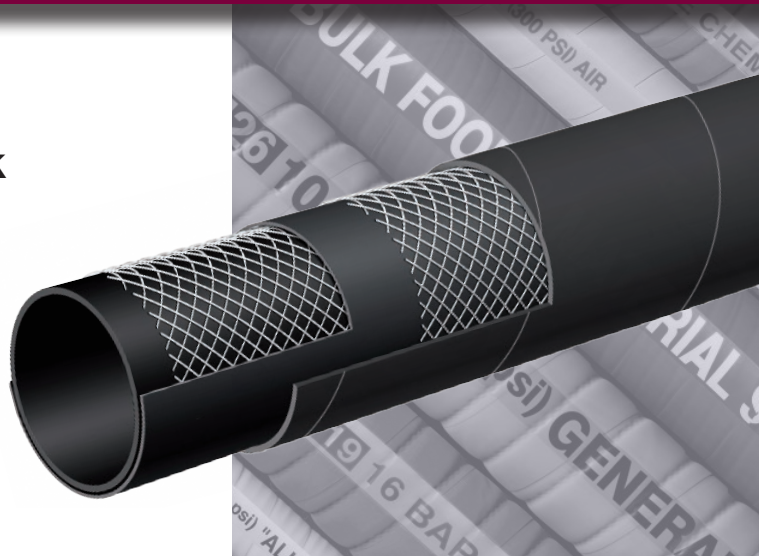


**T653AA (continued)**  
**Soft Wall Marine Exhaust**  
**Hose – SAE J2006 R1**

<b>Nominal Specifications</b>						
<b>Series</b>	<b>ID (in.)</b>	<b>ID (mm)</b>	<b>OD (in.)</b>	<b>OD (mm)</b>	<b>Max Rec. WP (PSI)</b>	<b>Weight (lbs./ft.)</b>
T653AA450	4 1/2	115	5.08	129	75	2.43
T653AA500	5	127	5.55	141	75	2.68
T653AA600	6	152	6.61	168	75	3.26
T653AA662	6 5/8	168	7.24	184	75	3.57
T653AA800	8	203	8.70	221	75	4.96

BECAUSE WE CONTINUALLY EXAMINE WAYS TO IMPROVE OUR PRODUCTS, WE RESERVE THE RIGHT TO ALTER SPECIFICATIONS OR DISCONTINUE PRODUCTS WITHOUT PRIOR NOTICE.

## T6D1AA 400 PSI Oil Rigger / Frack Discharge Hose

**Applications:**

Fracking fluids, liquid mud and crude oil delivery in oil field and gas exploration.

**Cover:**

Black synthetic elastomer – abrasion, oil and ozone resistant.

**Reinforcement:**

High tensile textile cords.

**Tube:**

Black synthetic elastomer.

**Working Pressure:**

Constant Pressure – 27 Bar (400 PSI)

**Temperature Range:**

-22°F (-30°C) to 176°F (+80°C)

**Branding:**

ALFAGOMMA – ITALY OIL RIGGER – FRACK 27 BAR (400 PSI) (in blue letters)

**Standard Length:**

100 feet

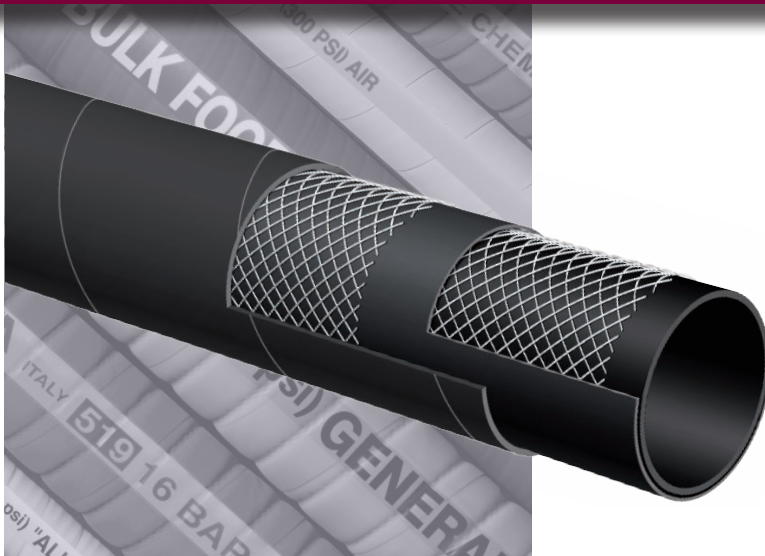
### Nominal Specifications

Series	ID (in.)	ID (mm)	OD (in.)	OD (mm)	Max Rec. WP (PSI)	Weight (lbs./ft.)
T6D1AA400	4	102	4.72	120	400	2.89

**COUPLING SUGGESTIONS**

★ Kuriyama offers a full line of Quick-Acting couplings, pin lug shank couplings and combination nipples. Refer to current Kuriyama-Couplings™ and Accessories Catalog for type and pricing.

BECAUSE WE CONTINUALLY EXAMINE WAYS TO IMPROVE OUR PRODUCTS, WE RESERVE THE RIGHT TO ALTER SPECIFICATIONS OR DISCONTINUE PRODUCTS WITHOUT PRIOR NOTICE.



## ST6D2AA

### 400 PSI Oil Rigger/Frack Discharge Hose with SUPERTUFF Cover

**Applications:**

Fracking fluids, liquid mud and crude oil delivery in heavy duty oil field and gas exploration.

**Cover:**

Black SUPERTUFF cover – abrasion, oil and ozone resistant.

**Reinforcement:**

High tensile textile cords.

**Tube:**

Black synthetic elastomer.

**Working Pressure:**

Constant Pressure – 27 Bar (400 PSI)

**Temperature Range:**

-22°F (-30°C) to 176°F (+80°C)

**Branding:**

ALFAGOMMA – ITALY OIL RIGGER – FRACK 27 BAR (400 PSI) (in blue letters)

**Standard Length:**

100 feet

### Nominal Specifications

Series	ID (in.)	ID (mm)	OD (in.)	OD (mm)	Max Rec. WP (PSI)	Weight (lbs./ft.)
ST6D2AA400	4	102	4.72	120	400	2.93

**COUPLING SUGGESTIONS**

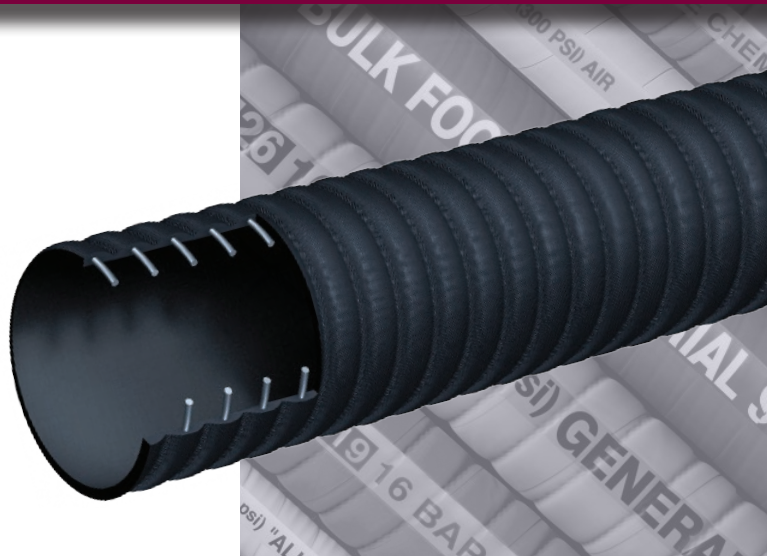
★ Kuriyama offers a full line of Quick-Acting couplings, pin lug shank couplings and combination nipples. Refer to current Kuriyama-Couplings™ and Accessories Catalog for type and pricing.

BECAUSE WE CONTINUALLY EXAMINE WAYS TO IMPROVE OUR PRODUCTS, WE RESERVE THE RIGHT TO ALTER SPECIFICATIONS OR DISCONTINUE PRODUCTS WITHOUT PRIOR NOTICE.

## CT601AA

### 150 PSI Corrugated Oil Rigger/Oil Field-Frack Tank Hose

**CORRUGATED**



**Applications:**

Oil field vacuum tank service, for handling crude oil, frack solutions and slurries.

**Note: For applications up to 35% aromatics. Not for use with refined petroleum products.**

**Cover:**

Black corrugated SBR – abrasion, ozone, limited oil resistance.

**Reinforcement:**

High tensile textile cords with flexible steel helix wire.

**Tube:**

Black Nitrile – PVC blend, limited oil resistance, for oil field use.

**Working Pressure:**

Constant Pressure – 10 Bar (150 PSI)

**Temperature Range:**

-22°F (-30°C) to 176°F (+80°C)

**Branding:**

ALFAGOMMA – ITALY T6C1 10 BAR (150 PSI) OIL FIELD-FRACK TANK S & D (in blue letters)

**Standard Length:**

100 feet: 2" through 4"

**Nominal Specifications**

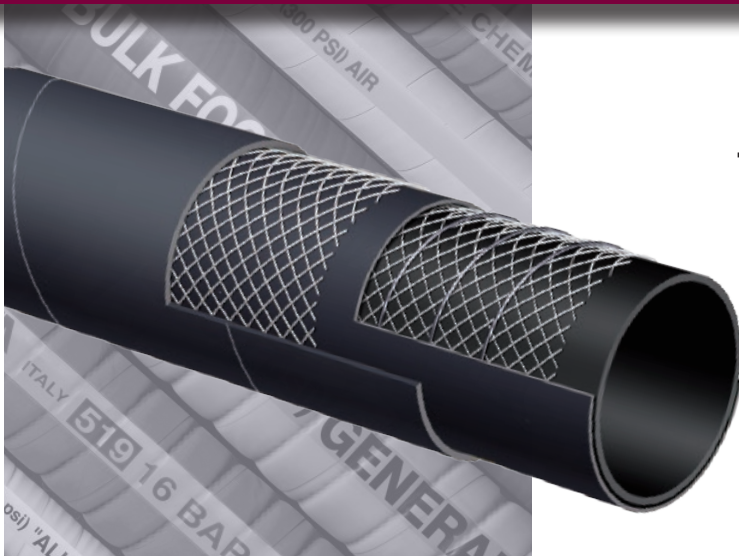
Series	ID (in.)	ID (mm)	OD (in.)	OD (mm)	Max Rec. WP (PSI)	Vacuum HG (in.)	Min. Bending Radius (in. @ 68°F)	Weight (lbs./ft.)
CT601AA200	2	51	2.40	61	150	30	6	0.86
CT601AA300	3	76	3.46	88	150	27	9	1.61
CT601AA400	4	102	4.49	114	150	27	12	2.39

**COUPLING SUGGESTIONS**

Quick-Acting couplings or combination nipples attached with bands.

★ Kuriyama offers a full line of Quick-Acting couplings, pin lug shank couplings and combination nipples. Refer to current Kuriyama-Couplings™ and Accessories Catalog for type and pricing.

BECAUSE WE CONTINUALLY EXAMINE WAYS TO IMPROVE OUR PRODUCTS, WE RESERVE THE RIGHT TO ALTER SPECIFICATIONS OR DISCONTINUE PRODUCTS WITHOUT PRIOR NOTICE.



## T601AA

### 150 PSI Oil Rigger/Oil Field-Fracc Tank Hose

**Applications:**

Oil field vacuum tank service, for handling crude oil, fracc solutions and slurries.

**Note: For applications up to 35% aromatics. Not for use with refined petroleum products.**

**Cover:**

Black SBR – abrasion, ozone, limited oil resistance.

**Reinforcement:**

High tensile textile cords with flexible steel helix wire.

**Tube:**

Black Nitrile – PVC blend, limited oil resistance, for oil field use.

**Working Pressure:**

Constant Pressure – 10 Bar (150 PSI)

**Temperature Range:**

-22°F (-30°C) to 176°F (+80°C)

**Branding:**

ALFAGOMMA – ITALY T601 10 BAR (150 PSI) OIL FIELD-FRACC TANK HOSE (in blue letters)

**Standard Length:**

100 feet: 2" through 6"  
20 feet: 6"

#### Nominal Specifications

Series	ID (in.)	ID (mm)	OD (in.)	OD (mm)	Max Rec. WP (PSI)	Vacuum HG (in.)	Min. Bending Radius (in. @ 68°F)	Weight (lbs./ft.)
T601AA200	2	51	2.40	61	150	30	10	0.93
T601AA300	3	76	3.46	88	150	27	15	1.73
T601AA400	4	102	4.57	116	150	27	20	2.40
T601AA600	6	152	6.61	168	150	24	30	4.59

**COUPLING SUGGESTIONS**

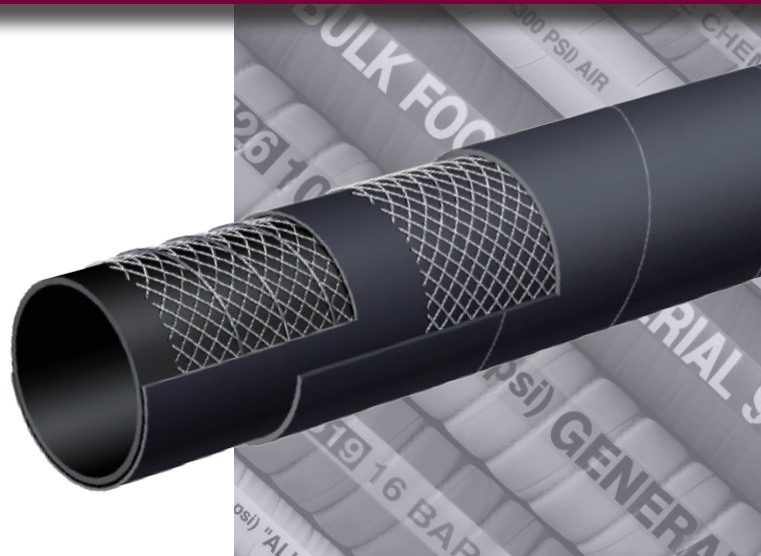
Quick-Acting couplings or combination nipples attached with bands.

★ Kuriyama offers a full line of Quick-Acting couplings, pin lug shank couplings and combination nipples. Refer to current Kuriyama-Couplings™ and Accessories Catalog for type and pricing.

BECAUSE WE CONTINUALLY EXAMINE WAYS TO IMPROVE OUR PRODUCTS, WE RESERVE THE RIGHT TO ALTER SPECIFICATIONS OR DISCONTINUE PRODUCTS WITHOUT PRIOR NOTICE.



## T604AA Flexor – SAE 100 R4 Oil Return Hose



### Applications:

Low pressure return lines or suction lines with half the bend radius requirements of SAE J517 100 R4, service with petroleum based hydraulic fluids, water-glycol and water-fire resistant hydraulic fluids, oil, lubricants, crude oil, fuel oils and water.

### Cover:

Black CR – oil, fuel, weather, ozone and abrasion-resistant.

### Reinforcement:

High tensile textile cords with flexible steel helix wire.

### Tube:

Black conductive NBR.

### Working Pressure:

Constant Pressure – 20 Bar (300 PSI) 3/4"  
17 Bar (250 PSI) 1" 14 Bar (200 PSI) 1 1/4"  
10 Bar (150 PSI) 1 1/2" 7 Bar (100 PSI) 2"

### Temperature Range:

-40° F (-40° C) to 212° F (+100° C) constant operation  
Maximum operating temperature: 257° F (+125° C).  
Air maximum temperature: 175° F (80° C).

**Note: Operating temperatures in excess of 212° F (+100° C) may materially reduce the life of the hose.**

### Branding:

ALFAGOMMA – ITALY – T604 (PSI) – SAE 100 R4 – (SIZE) –  
Date (in white letters)

### Standard Length:

100 feet

### Nominal Specifications

Series	ID (in.)	ID (mm)	OD (in.)	OD (mm)	Max Rec. WP (PSI)	Vacuum HG (in.)	Min. Bending Radius (in. @ 68°F)	Weight (lbs./ft.)
T604AA075	3/4	19	1.14	29	300	30	2 1/4	0.41
T604AA100	1	25	1.38	35	250	30	3	0.52
T604AA125	1 1/4	32	1.65	42	200	30	3 3/4	0.61
T604AA150	1 1/2	38	1.89	48	150	30	4 1/2	0.70
T604AA200	2	51	2.40	61	100	30	6	0.90

### COUPLING SUGGESTIONS

Crimp-on permanent type or combination nipples with bands.

Note: Hose cover does not need to be removed before attaching couplings.

★ Kuriyama offers a full line of Quick-Acting couplings, pin lug shank couplings and combination nipples. Refer to current Kuriyama-Couplings™ and Accessories Catalog for type and pricing.

BECAUSE WE CONTINUALLY EXAMINE WAYS TO IMPROVE OUR PRODUCTS, WE RESERVE THE RIGHT TO ALTER SPECIFICATIONS OR DISCONTINUE PRODUCTS WITHOUT PRIOR NOTICE.



## T605AA 150 PSI Black Petroleum S & D Hose

### Applications:

For suction and discharge applications in truck and tank car transfer of gasoline, oil and other petroleum-based products with up to 50% aromatic content.

### Cover:

Black CR – abrasion, ozone and hydrocarbon resistant.

### Reinforcement:

High tensile textile cords with flexible steel helix wire.

### Tube:

Black conductive NBR.

### Working Pressure:

Constant Pressure – 10 Bar (150 PSI)

### Temperature Range:

-22°F (-30°C) to 176°F (+80°C)

### Branding:

ALFAGOMMA – ITALY T605 – 10 BAR (150 PSI)  
PETROLEUM – S & D - SAE 100R4 (in red letters)

### Standard Length:

100 feet: 3/4" through 6"  
20 feet: 6", 8"

**T605 IS NOT RECOMMENDED FOR USE ON A REEL.**

### Nominal Specifications

Series	ID (in.)	ID (mm)	OD (in.)	OD (mm)	Max Rec. WP (PSI)	Vacuum HG (in.)	Min. Bending Radius (in. @ 68°F)	Weight (lbs./ft.)
T605AA075	3/4	19	1.14	29	150	30	3	0.41
T605AA100	1	25	1.38	35	150	30	4	0.52
T605AA125	1 1/4	32	1.65	42	150	30	5	0.61
T605AA150	1 1/2	38	1.89	48	150	30	6	0.71
T605AA200	2	51	2.40	61	150	30	8	0.91
T605AA250	2 1/2	63	2.95	75	150	27	10	1.42
T605AA300	3	76	3.54	90	150	27	12	1.75
T605AA400	4	102	4.65	118	150	27	16	2.56
T605AA600	6	152	6.69	170	150	24	24	4.95
T605AA800	8	203	8.86	225	150	21	32	7.87

### COUPLING SUGGESTIONS

Quick-Acting, combination nipples attached with bands or internally expanded brass couplings with gasket seal attached with ferrules.

★ Kuriyama offers a full line of Quick-Acting couplings, pin lug shank couplings and combination nipples. Refer to current Kuriyama-Couplings™ and Accessories Catalog for type and pricing.

BECAUSE WE CONTINUALLY EXAMINE WAYS TO IMPROVE OUR PRODUCTS, WE RESERVE THE RIGHT TO ALTER SPECIFICATIONS OR DISCONTINUE PRODUCTS WITHOUT PRIOR NOTICE.

# Petroleum



## 6C5AA 150 PSI Corrugated Tank Truck Hose

**CORRUGATED**



**NEW  
PRODUCT**

### Applications:

For suction and discharge applications in truck and tank car transfer of gasoline, oil and other petroleum-based products with up to 50% aromatic content.

### Cover:

Black corrugated CR – abrasion, ozone, and hydrocarbon resistant.

### Reinforcement:

High tensile textile cords with flexible steel helix wire.

### Tube:

Black Conductive NBR.

### Working Pressure:

Constant Pressure – 10 Bar (150 PSI)

### Temperature Range:

-22°F (-30°C) to 176°F (+80°C)

### Branding:

ALFAGOMMA – ITALY T6C5 10 BAR (150 PSI)  
PETROLEUM TANK TRUCK (in red letters)

### Standard Length:

100 feet: 2" through 4"  
20 feet: 6"

## Nominal Specifications

Series	ID (in.)	ID (mm)	OD (in.)	OD (mm)	Max Rec. WP (PSI)	Vacuum HG (in.)	Min. Bending Radius (in. @ 68°F)	Weight (lbs./ft.)
6C5AA200	2	51	2.48	63	150	30	4	0.85
6C5AA300	3	76	3.44	90	150	27	6	1.57
6C5AA400	4	102	4.57	116	150	27	8	2.21
6C5AA600	6	152	6.54	166	150	27	12	3.59

### COUPLING SUGGESTIONS

Quick-Acting couplings or combination nipples attached with bands.

- ★ Kuriyama offers a full line of Quick-Acting couplings, pin lug shank couplings and combination nipples. Refer to current Kuriyama-Couplings™ and Accessories Catalog for type and pricing.

BECAUSE WE CONTINUALLY EXAMINE WAYS TO IMPROVE OUR PRODUCTS, WE RESERVE THE RIGHT TO ALTER SPECIFICATIONS OR DISCONTINUE PRODUCTS WITHOUT PRIOR NOTICE.



## T605AH 150 PSI Red Petroleum S & D Hose

**Applications:**

For suction and discharge applications in truck and tank car transfer of gasoline, oil and other petroleum-based products with up to 50% aromatic content.

**Cover:**

Red CR – abrasion, ozone and hydrocarbon resistant.

**Reinforcement:**

High tensile textile cords with flexible steel helix wire.

**Tube:**

Black conductive NBR.

**Working Pressure:**

Constant Pressure – 10 Bar (150 PSI)

**Temperature Range:**

-22°F (-30°C) to 176°F (+80°C)

**Branding:**

ALFAGOMMA – ITALY T605 – 10 BAR (150 PSI)  
PETROLEUM – S & D (in yellow letters)

**Standard Length:**

100 feet

**T605 IS NOT RECOMMENDED FOR USE ON A REEL.**

Nominal Specifications								
Series	ID (in.)	ID (mm)	OD (in.)	OD (mm)	Max Rec. WP (PSI)	Vacuum HG (in.)	Min. Bending Radius (in. @ 68°F)	Weight (lbs./ft.)
T605AH150	1 1/2	38	1.89	48	150	30	6	0.73
T605AH200	2	51	2.40	61	150	30	8	0.94
T605AH300	3	76	3.46	88	150	27	12	1.74
T605AH400	4	102	4.57	116	150	27	16	2.41

**COUPLING SUGGESTIONS**

Quick-Acting, combination nipples attached with bands or internally expanded brass couplings with gasket seal attached with ferrules.

★ Kuriyama offers a full line of Quick-Acting couplings, pin lug shank couplings and combination nipples. Refer to current Kuriyama-Couplings™ and Accessories Catalog for type and pricing.

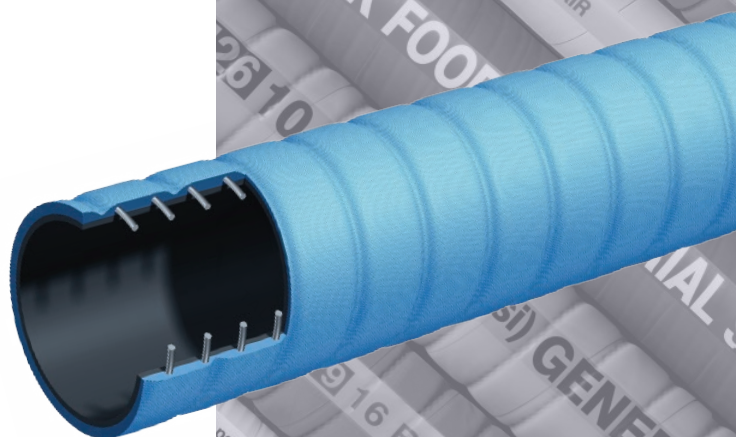
BECAUSE WE CONTINUALLY EXAMINE WAYS TO IMPROVE OUR PRODUCTS, WE RESERVE THE RIGHT TO ALTER SPECIFICATIONS OR DISCONTINUE PRODUCTS WITHOUT PRIOR NOTICE.

# Petroleum



## T606AE 150 PSI Corrugated Petroleum S & D – Arctic Hose

**CORRUGATED**



### Applications:

For suction and discharge applications in truck and tank car transfer of gasoline, oil and other petroleum-based products with up to 50% aromatic content. Where extreme flexibility is needed in low temperature.

### Cover:

Blue corrugated – abrasion, ozone and hydrocarbon resistant.

### Reinforcement:

High tensile textile cords with flexible steel helix wire.

### Tube:

Black conductive NBR.

### Working Pressure:

Constant Pressure – 150 PSI

### Temperature Range:

-65°F (-54°C) to 180°F (+82°C)

### Branding:

ALFAGOMMA – ITALY T606 – 10 BAR (150 PSI)  
PETROLEUM – S & D Arctic (in blue letters on yellow layline)

### Standard Length:

100 feet

## Nominal Specifications

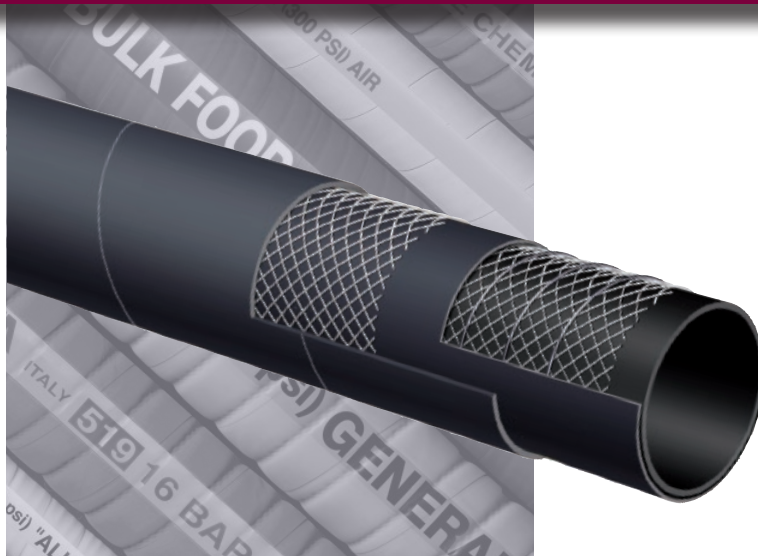
Series	ID (in.)	ID (mm)	OD (in.)	OD (mm)	Max Rec. WP (PSI)	Vacuum HG (in.)	Min. Bending Radius (in. @ 68°F)	Weight (lbs./ft.)
T606AE200	2	51	2.48	63	150	30	3	1.06
T606AE300	3	76	3.54	90	150	30	4 1/2	1.84
T606AE400	4	102	4.57	116	150	30	6	2.67

### COUPLING SUGGESTIONS

Quick-Acting, combination nipples attached with bands or internally expanded brass couplings with gasket seal attached with ferrules.

- ★ Kuriyama offers a full line of Quick-Acting couplings, pin lug shank couplings and combination nipples. Refer to current Kuriyama-Couplings™ and Accessories Catalog for type and pricing.

BECAUSE WE CONTINUALLY EXAMINE WAYS TO IMPROVE OUR PRODUCTS, WE RESERVE THE RIGHT TO ALTER SPECIFICATIONS OR DISCONTINUE PRODUCTS WITHOUT PRIOR NOTICE.



## T620AA

### 300 PSI Black Fuel & Oil S & D Hose

**Applications:**

Fuel and oil suction and discharge for up to 50% aromatic content. Designed for heavy duty applications.

**Cover:**

Black conductive CR – abrasion, ozone and hydrocarbon resistant.

**Reinforcement:**

High tensile textile cords with steel helix wire and static wire.

**Tube:**

Black conductive NBR.

**Working Pressure:**

Constant Pressure – 20 Bar (300 PSI)

**Temperature Range:**

-22°F (-30°C) to 176°F (+80°C)

**Branding:**

ALFAGOMMA – ITALY T620 – 20 BAR (300 PSI)  
PETROLEUM – S & D Ω (in red letters)

**Standard Length:**

100 feet: 2" through 6"  
20 feet: 6", 8"

### Nominal Specifications

Series	ID (in.)	ID (mm)	OD (in.)	OD (mm)	Max Rec. WP (PSI)	Vacuum HG (in.)	Min. Bending Radius (in. @ 68°F)	Weight (lbs./ft.)
T620AA200	2	51	2.48	63	300	30	8	1.10
T620AA300	3	76	3.54	90	300	27	12	1.77
T620AA400	4	102	4.57	116	300	27	16	2.43
T620AA600	6	152	6.69	170	300	24	24	5.60
T620AA800	8	203	8.86	225	300	21	32	9.24

**COUPLING SUGGESTIONS**

Quick-Acting, combination nipples attached with bands or internally expanded brass couplings with gasket seal attached with ferrules.

★ Kuriyama offers a full line of Quick-Acting couplings, pin lug shank couplings and combination nipples. Refer to current Kuriyama-Couplings™ and Accessories Catalog for type and pricing.

BECAUSE WE CONTINUALLY EXAMINE WAYS TO IMPROVE OUR PRODUCTS, WE RESERVE THE RIGHT TO ALTER SPECIFICATIONS OR DISCONTINUE PRODUCTS WITHOUT PRIOR NOTICE.

## T629AA 150 PSI Black Biofuel Petroleum S & D Hose



### Applications:

For suction and discharge applications in truck and tank car transfer of gasoline, oil and Biofuels – up to E98 and B100\* with up to 60% aromatic content at ambient temperature.

### Cover:

Black specially-blended neoprene – added resistance against abrasion, ozone and hydrocarbons.

### Reinforcement:

High tensile textile cords with steel helix wire.

### Tube:

Black conductive synthetic rubber.

### Working Pressure:

Constant Pressure – 10 Bar (150 PSI)

### Temperature Range:

-22°F (-30°C) to 176°F (+80°C)

### Branding:

ALFAGOMMA – ITALY T629 – 10 BAR (150 PSI)  
BIOFUEL Ω (in green letters)

### Standard Length:

100 feet: 3/4" through 4"

★ **T629 is not recommended for use on a reel.**

\*Applies to Biodiesels which meet the ASTM D6751 criteria.

### Nominal Specifications

Series	ID (in.)	ID (mm)	OD (in.)	OD (mm)	Max Rec. WP (PSI)	Vacuum HG (in.)	Min. Bending Radius (in. @ 68°F)	Weight (lbs./ft.)
T629AA075	3/4	19	1.14	29	150	30	3	0.41
T629AA100	1	25	1.38	35	150	30	4	0.51
T629AA150	1 1/2	38	1.89	48	150	30	6	0.71
T629AA200	2	51	2.40	61	150	30	8	0.91
T629AA250	2 1/2	63	2.95	75	150	27	10	1.42
T629AA300	3	76	3.46	88	150	27	12	1.71
T629AA400	4	102	4.57	116	150	27	16	2.38

### COUPLING SUGGESTIONS

Quick-Acting or combination nipples attached with bands.

★ Kuriyama offers a full line of Quick-Acting couplings, pin lug shank couplings and combination nipples. Refer to current Kuriyama-Couplings™ and Accessories Catalog for type and pricing.

BECAUSE WE CONTINUALLY EXAMINE WAYS TO IMPROVE OUR PRODUCTS, WE RESERVE THE RIGHT TO ALTER SPECIFICATIONS OR DISCONTINUE PRODUCTS WITHOUT PRIOR NOTICE.



## T650AH 150 PSI Oil Discharge Hose

**Applications:**

Oil discharge hose designed for use on trucks, docks or barges where a soft wall hose is required.

**Cover:**

Red CR – abrasion, ozone and hydrocarbon resistant.

**Reinforcement:**

Spiraled high tensile textile cords with embedded static wire.

**Tube:**

Black conductive NBR.

**Working Pressure:**

Constant Pressure – 10 Bar (150 PSI)

**Temperature Range:**

-22°F (-30°C) to 176°F (+80°C)

**Branding:**

ALFAGOMMA – ITALY T650 10 BAR (150 PSI) – PETROLEUM DELIVERY (in yellow letters)

**Standard Length:**

100 feet

### Nominal Specifications

Series	ID (in.)	ID (mm)	OD (in.)	OD (mm)	Max Rec. WP (PSI)	Weight (lbs./ft.)
T650AH150	1 1/2	38	1.97	50	150	0.77
T650AH200	2	51	2.40	61	150	0.82
T650AH300	3	76	3.46	88	150	1.42
T650AH400	4	102	4.49	114	150	1.92

**COUPLING SUGGESTIONS**

Quick-Acting or combination nipples attached with bands.

★ Kuriyama offers a full line of Quick-Acting couplings, pin lug shank couplings and combination nipples. Refer to current Kuriyama-Couplings™ and Accessories Catalog for type and pricing.

BECAUSE WE CONTINUALLY EXAMINE WAYS TO IMPROVE OUR PRODUCTS, WE RESERVE THE RIGHT TO ALTER SPECIFICATIONS OR DISCONTINUE PRODUCTS WITHOUT PRIOR NOTICE.



## T614AA

### 150 PSI Hot Tar & Asphalt S & D Hose



**Applications:**

Hot tar and asphalt suction and discharge service.

**Cover:**

Black CSM – abrasion, ozone and hot tar resistant.

**Reinforcement:**

High tensile textile cords with steel helix wire.

**Tube:**

Black NBR – hot tar and asphalt resistant.

**Working Pressure:**

10 Bar (150 PSI)

**Temperature Range:**

-4°F (-20°C) to 356°F (+180°C)

**Branding:**

ALFAGOMMA – ITALY T614 10 BAR (150 PSI) HOT TAR AND ASPHALT (on red stripe)

**Standard Length:**

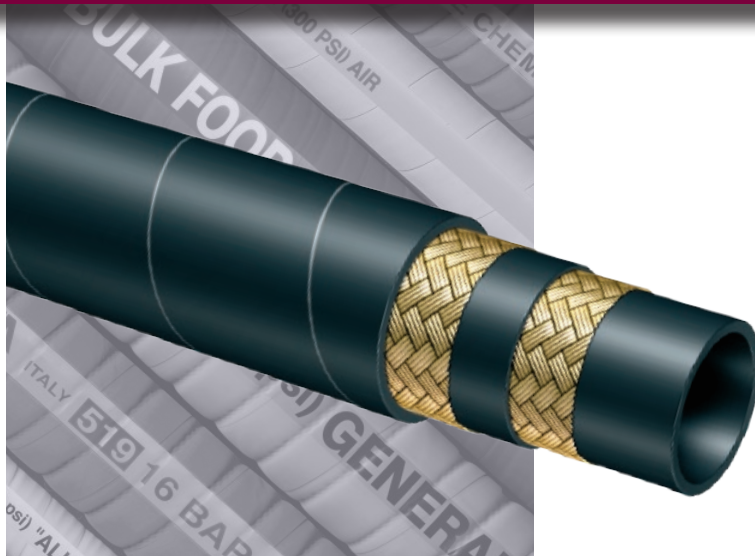
100 feet

### Nominal Specifications

Series	ID (in.)	ID (mm)	OD (in.)	OD (mm)	Wall Thickness (mm)	Max Rec. WP (PSI)	Vacuum HG (in.)	Min. Bending Radius (in.)	Weight (lbs./ft.)
T614AA200	2	51	2.72	69	9	150	30	10	1.64
T614AA300	3	76	3.78	96	10	150	27	15	2.69
T614AA400	4	102	4.80	122	10	150	27	20	3.57

**COUPLING SUGGESTIONS**

Permanently attached couplings are suggested for assemblies.



## T631AA

### 300 PSI Hot Tar & Asphalt Applicator Delivery Hose

**Applications:**

Hot tar and asphalt delivery service.

**Cover:**

Black CR – abrasion, ozone, hydrocarbon and fire resistant.

**Reinforcement:**

High tensile steel wire braids.

**Tube:**

Black NBR – hot tar and asphalt resistant.

**Safety Factor:**

10:1

**Working Pressure:**

20 Bar (300 PSI)

**Temperature Range:**

-22°F (-30°C) to 356°F (+180°C)

**Branding:**

ALFAGOMMA – ITALY T631 20 BAR (300 PSI) HOT TAR AND ASPHALT (embossed)

**Standard Length:**

100 feet

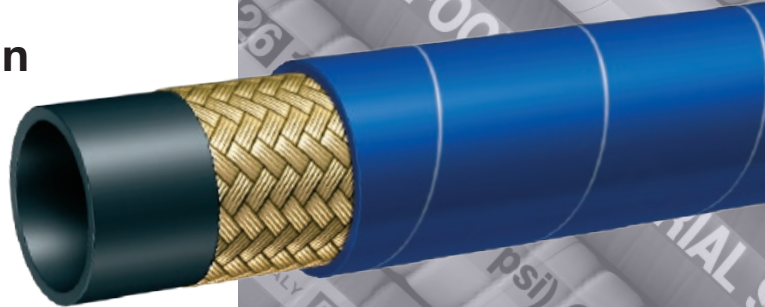
#### Nominal Specifications

Series	ID (in.)	ID (mm)	OD (in.)	OD (mm)	Wall Thickness (mm)	Max Rec. WP (PSI)	Min. Bending Radius (in.)	Weight (lbs./ft.)
T631AA075	3/4	19	1.26	32	6	300	3	0.50
T631AA100	1	25	1.50	38	6	300	3	0.77

**COUPLING SUGGESTIONS**

Permanently attached couplings are suggested for assemblies.

## T631AE 300 PSI Hydrocarbon Drain Hose



**NEW  
PRODUCT**

**Applications:**

Drain hose for residue from cleaning storage tanks and refining hydrocarbons.

**Cover:**

Blue CR – abrasion and hydrocarbon resistant.

**Reinforcement:**

High tensile steel wire braids.

**Tube:**

Black NBR-hydrocarbon resistant.

**Working Pressure:**

20Bar (300 PSI)

**Temperature Range:**

-22°F (-30°C) to 356°F (+180°C)

**Branding:**

ALFAGOMMA-HYDROCARBON DRAIN HOSE-300PSI

**Standard Length:**

100 Feet

### Nominal Specifications

Series	ID (in.)	ID (mm)	OD (in.)	OD (mm)	Wall Thickness (mm)	Max Rec. WP (PSI)	Min. Bending Radius (in.)	Approx. Weight (lbs./ft.)
T631AE075	3/4	19	1.26	32	6	300	3	0.50